



# greenopolis

A project by Orris & The 3C Company

A project by Orris & The 3C Company



## Green Living, Sector 89, Gurgaon

A green building is one which balances environmental responsibility, resource and energy efficiency, enriching community well-being and occupant comfort.

# greenopolis

A project by Orris & The 3C Company



## Cost Reduction

Not only do you save precious water and electricity, but also enjoy monetary savings. Thanks to our energy efficient mechanical and electrical equipments.

BOOM BARRIERS

CCTV's FOR COMMON AREA

MULTI-LEVEL 24X7 SECURITY

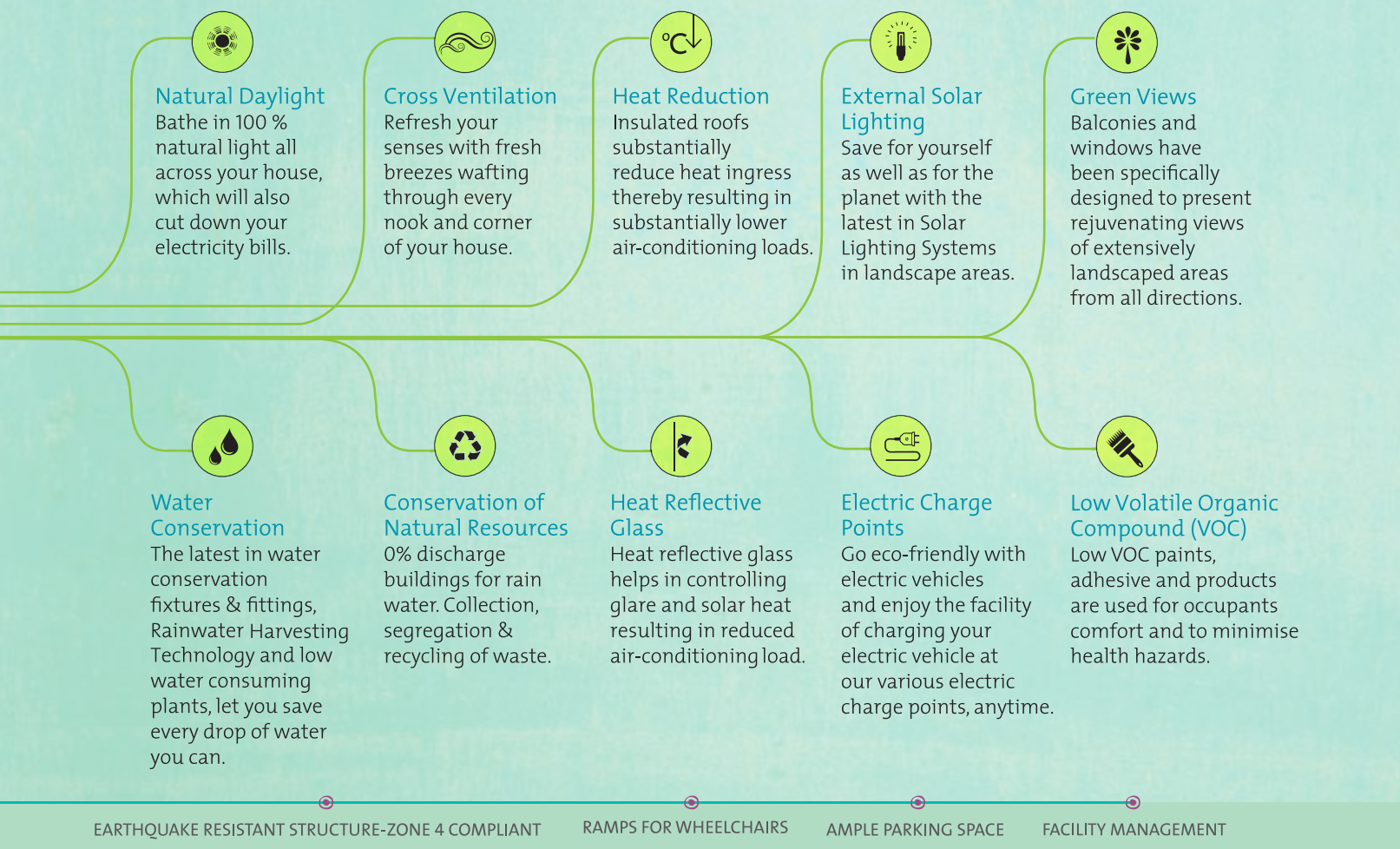
24X7 POWER BACK UP

24X7 WATER SUPPLY

AREA	WALLS	FLOOR	FALSE CEILING	DOORS FINISH
LIVING & DINING	Oil Bound Distemper	High end vitrified tiles	No	Veneered Door
PASSAGE	Oil Bound Distemper	High end vitrified tiles	No	-
BEDROOMS	Oil Bound Distemper	Laminated Wooden Flooring (Imported)	No	Skin Door
TOILETS	Ceramic Tiles cladded up to 2100 from Finish Floor level Kajaria / Somany	Ceramic Tiles 300 x 300 Kajaria / Somany	Yes	Skin Door
KITCHEN	Ceramic Tiles cladding 600 high above the working counter Kajaria / Somany	Ceramic Tiles 300 x 300 Kajaria / Somany	No	Skin Door
UTILITY	External Paint	Ceramic Tiles 300 x 300 Kajaria / Somany	No	UPVC Doors / Aluminum Doors
BALCONIES	External Paint	Ceramic Tiles 300 x 300 Kajaria / Somany	No	UPVC Doors / Aluminum Doors
SERVANT ROOM	Oil Bound Distemper	Ceramic Tiles 300 x 300 Kajaria / Somany	No	Skin Door
SERVANT TOILET	Oil Bound Distemper	Ceramic Tiles 300 x 300 Kajaria / Somany	YES	UPVC Doors / Aluminum Doors

\*All dimensions in mm.





## Specifications

HARDWARE	WINDOWS	SANITARY WARE	
		FIXTURES	FITTINGS
Dorset	UPVC Window/ Aluminum Window	-	-
-	UPVC Window / Aluminum Window	-	-
Dorset	UPVC Window / Aluminum Window	-	-
Dorset	UPVC Window / Aluminum Window	Wash Basin & and WC from Hindware	Fittings from Jaquar/ equivalent Single Lever Fittings in Master Toilet and Quarter Turn Fittings in other Toilets
Dorset	UPVC Window / Aluminum Window	Sink from Jayna	Wall Mounted Fittings from Jaquar/equivalent
As per section	UPVC Window / Aluminum Window	-	-
As per section	UPVC Window / Aluminum Window	-	-
Dorset	UPVC Window / Aluminum Window	-	-
As per section	UPVC Window / Aluminum Window	Anglo-Indian WC from Hindware	-

## Green Living

Greenopolis is an innovatively designed habitat integrating open green areas, social spaces and infrastructure in an environmentally sustainable way.

Greenopolis has a vibrant mix of public, semi-public and private spaces all interconnected through a maze of walkways. Community spaces like parks, play areas, plazas, shopping and entertainment hubs have been weaved into the fabric of a resplendent community life.

Our vision is to create an environment-friendly habitat encompassing all elements for your spiritual and physical well-being.

- Eco-friendly habitat in Sector 89, Gurgaon
- A 'rewarding' living experience with varied apartment choices - 2, 3, & 4 bedroom apartments
- Cohesive clusters and neighbourhoods with each having their own distinct gardens
- Efficient planning of apartments segregated with private and formal areas
- Two-side open 'breathing' apartments with natural light and ventilation
- Master bedrooms with corner windows with two-side view of the green spaces

## Host of Amenities

The beautifully designed multi-use spaces offer ample amenities for recreation, interaction, cultural expression and for the exchange of rich diversity of experiences.

- |                |  |  |                 |
|----------------|--|--|-----------------|
| Primary school |  |  | Shopping plaza  |
| Nursery school |  |  | Sports plaza    |
| Clinic         |  |  | Club            |
| Jogging track  |  |  | Meditation zone |

- club 89**
- |  |                             |
|--|-----------------------------|
|  | ● Swimming Pool             |
|  | ● Gymnasium                 |
|  | ● Cards Room                |
|  | ● Squash Court              |
|  | ● Banquet                   |
|  | ● Badminton Court (Outdoor) |
|  | ● Yoga/Dance                |
|  | ● Food Court                |
|  | ● Lounge                    |
|  | ● Billiards/Pool            |
|  | ● Table Tennis              |



## Master Plan

- Pedestrian-friendly green ground areas
- Wide sidewalk footpaths & bicycle oriented streets throughout the community
- The traffic circulation is kept to the perimeter and maximum parking is provided in the basement
- The drop-off areas form large celebrated plazas at nodal points of visually connected axis

- ## Master Plan

  - Pedestrian-friendly green ground areas
  - Wide sidewalk footpaths & bicycle oriented streets throughout the community
  - The traffic circulation is kept to the perimeter and maximum parking is provided in the basement
  - The drop-off areas form large celebrated plazas at nodal points of visually connected axis



# Serendipitous Alliance

Greenopolis is a testament to the combined vision of Orris and The 3C Company – An exemplary development imbuing the best of sustainable living.



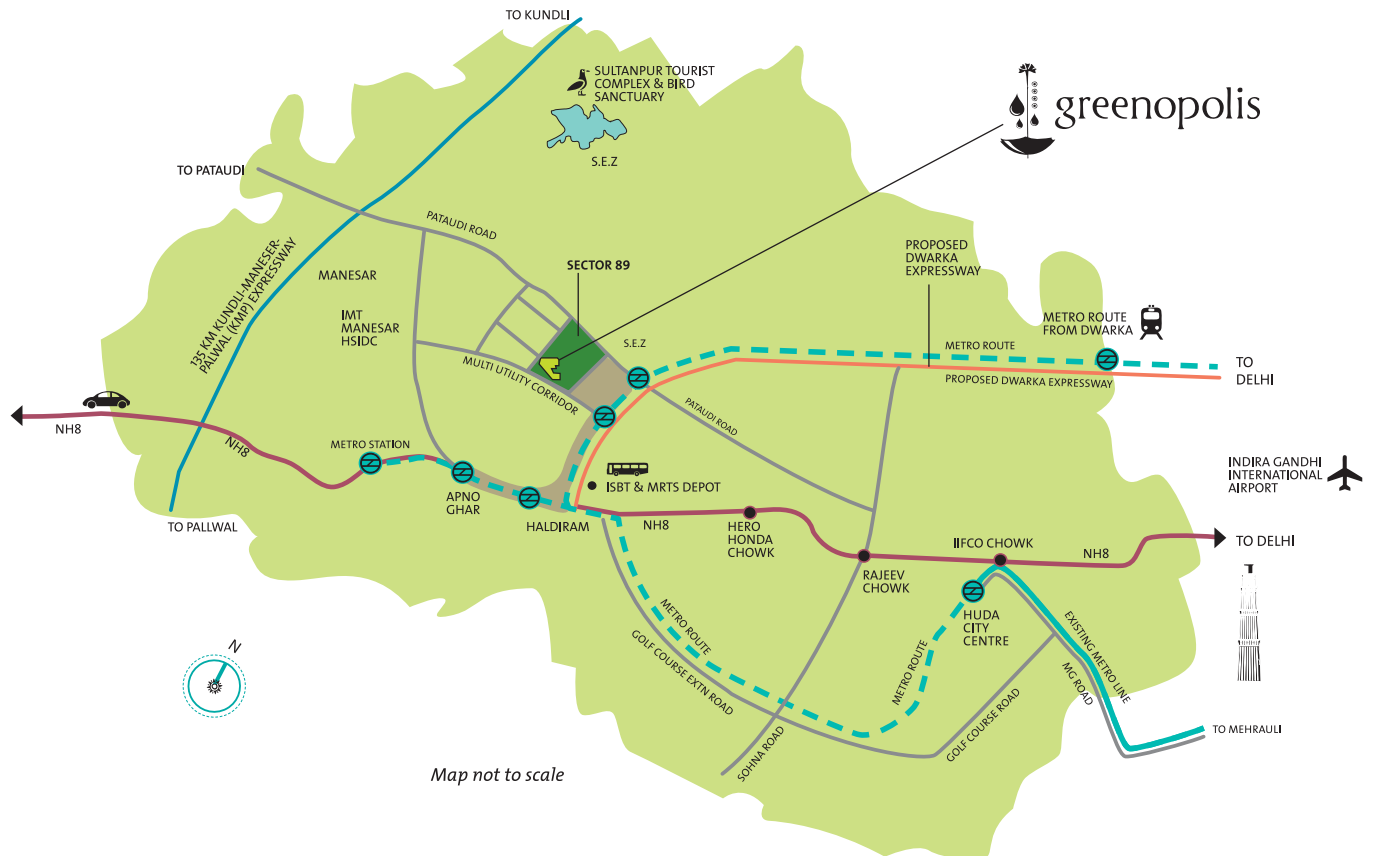
While Orris' core expertise lies in Real Estate, the company has remarkably forayed into different verticals like Golf, Education, Hospitality and Energy. With the largest land bank in the New Gurgaon area, the company has already launched 4 projects in Gurgaon and 2 on the Yamuna Expressway apart from a number of other ventures in the pipeline. The company is poised to bring about a paradigm shift in the way quality is perceived, setting high benchmarks in every sphere.



Leading the 'Green Revolution' in Delhi/NCR, The 3C Company is creating landmark developments, which work in harmony with the environment to add real value to lives. Driven by the motto to "Create, Care and Conserve", The 3C Company has excelled and achieved milestones by having already delivered more than 13 million square feet of niche developments.

# Strategic Location

Well-connected and in close proximity to Dwarka Expressway, KMP Expressway and IGI Airport.



Map not to scale

Map not to scale

- SECTOR 89
- COMMERCIAL SECTOR
- PROPOSED METRO STATION
- EXISTING METRO LINE
- PROPOSED METRO ROUTE
- NH 8
- PROPOSED 150m WIDE DWARKA EXPRESSWAY
- KUNDLI-MANESAR-PALWAL (KMP) EXPRESSWAY

## Distance from Sector 89

Dwarka Expressway	2 mins
NH8	5 mins
Manesar Toll	7 mins
Haldiram	10 mins
IMT Manesar	10 mins
Rajiv Chowk	15 mins
IIFCO Chowk	20 mins
Airport	25 mins



**Corporate Office Orris:** Orris HQ,  
M.G. Road, Gurgaon-122002.

**Tel:** +91 0124-4979200 **Fax:** 0124-2350273/74

**1800-212-2222 @ mail@orris.in OIPL to 53030**

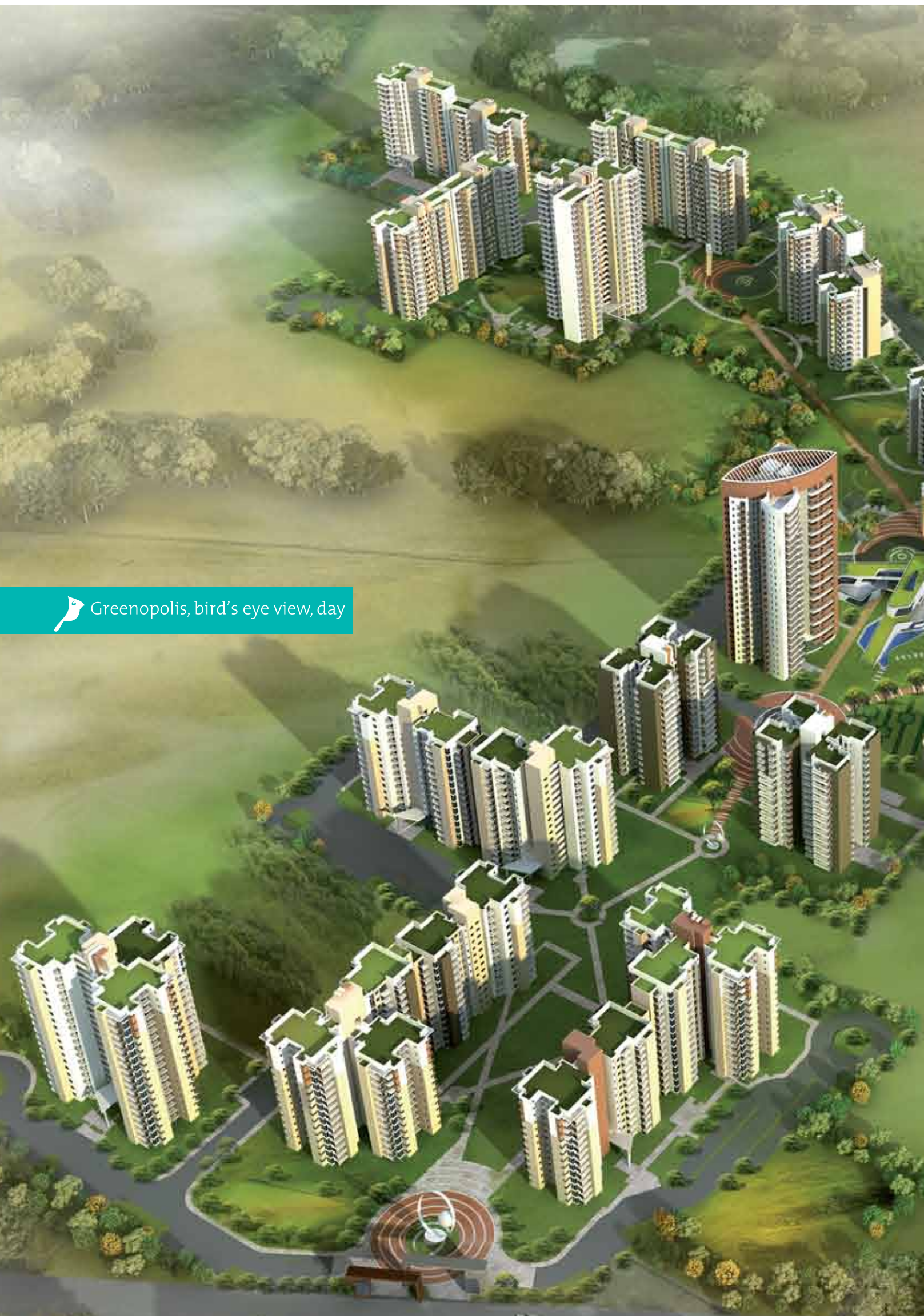
**Corporate Office 3C:** Paras Twin Towers, Tower B, 8th Floor,  
Golf Course Road, Sector 54, Gurgaon-122002, Haryana.

**Tel:** 0124 4405440 **Fax:** 0124 4405441

**Email:** gurgaonsales@the3c.in

**License details:** The project is duly approved / licensed by Government of Haryana, Department of Town and Country Planning vide License no: 115 of 2011 dated 23.12.2011 issued by DGTC, Haryana pertaining to Group Housing colony measuring 47.218 acres in Gurgaon. Name of the Colonizer: M/s Orris Infrastructure Pvt.Ltd. No. and date of approved Building Plans: ZP-789/ID (BS) 2012/Dated: 7.6.12. Total no. of units: 2317. Provision of: High School, 2 Primary Schools, 2 Nursery Schools, Crèche, Religious Bui Center, Dispensary and Sub Post Office. All approvals can be checked in the office of the developer.  
**Disclaimer:** Facilities/layouts/specifications/renderings/information contained herein are indicative and subject to change as maybe required by the authorities/ developer and cannot form part of any offer or contract. Areas mentioned are on super built up basis which include area of walls and proportionate area of staircase, lift, common passage, common facilities etc. 1 sq mt=10.764sq ft.





Greenopolis, bird's eye view, day



## The Architects



Since its inception in 1993, Design and Development is working with the philosophy based on the principles of balancing environmental responsibility and resource efficiency with occupant comfort and community sensitivity. D&D's designed ecologically responsible habitats and work places have shown exemplary results in reduced energy bills, low water and material consumption, low wastages leading to lesser Carbon Footprint, benefiting our planet and the people. D&D has many LEED certified Platinum & Gold rated green buildings to its credit.

