

Green Ville



Overview:-

Get immersed in an International lifestyle : Unmistakably International

A little bit of Switzerland in your life. The serene, pollution free, vast openness will overwhelm you with the rich exclusivity of an exotic lifestyle. Keenly pursued International architecture, the aesthetic looks and plush interiors will make you at home with the best of both worlds.

An exclusive state-of-the-art club with landscaped greens, in addition will lift your spirit of living to greater heights.

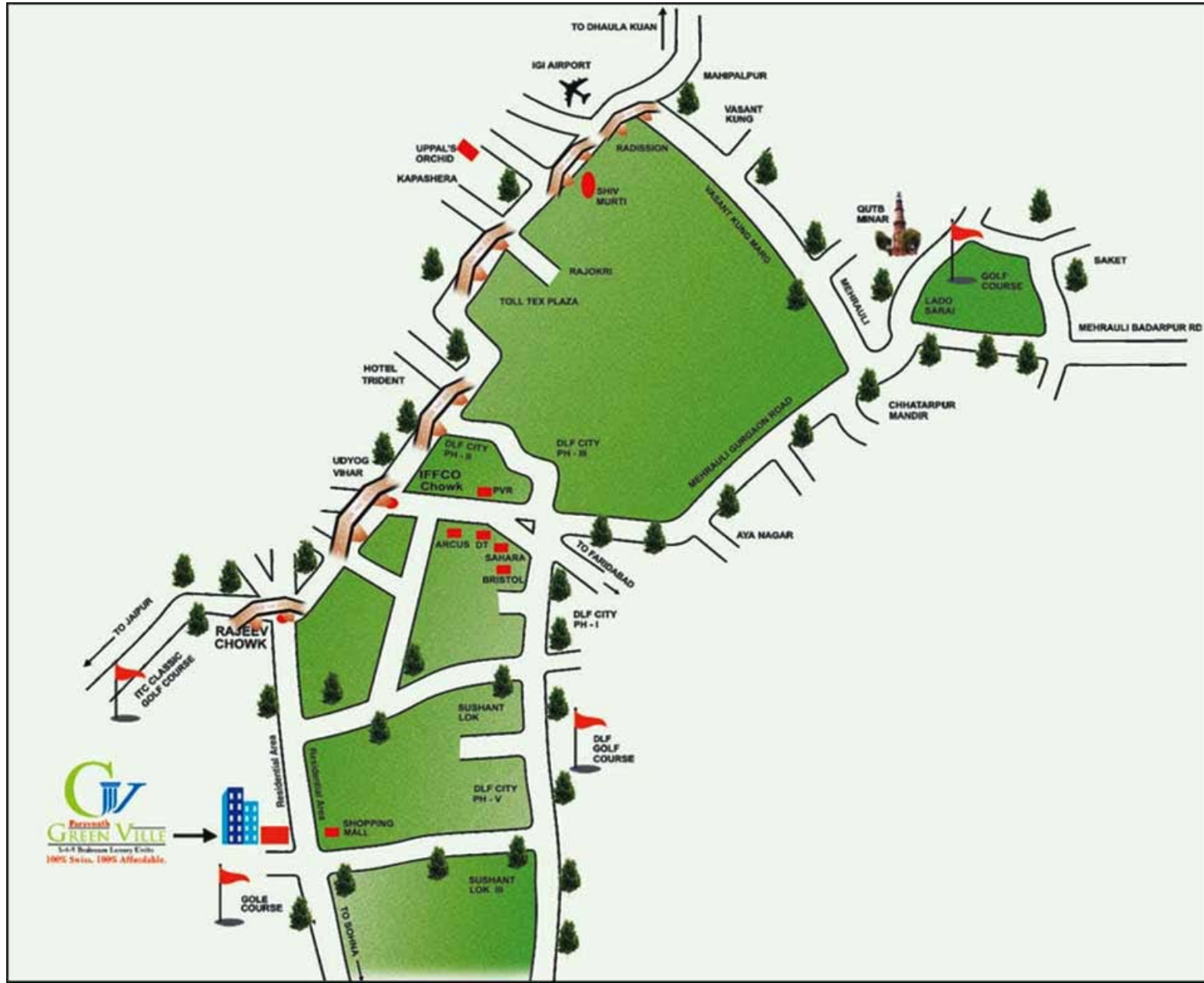
Yes, it is now possible to enjoy the pleasure of International living at Parsvnath Green Ville, [Gurgaon](#).

Welcome to an International Splendour !

Come home to an exclusive International lifestyle. The unmistakably unique International architecture and unspoilt serenity, the mesmerizing Splendour of modern amenities matched with boundless green expanse.

Parsvnath Green Ville, where life is an enjoyable experience.

Location Plan



Site Plan



Floor Plans



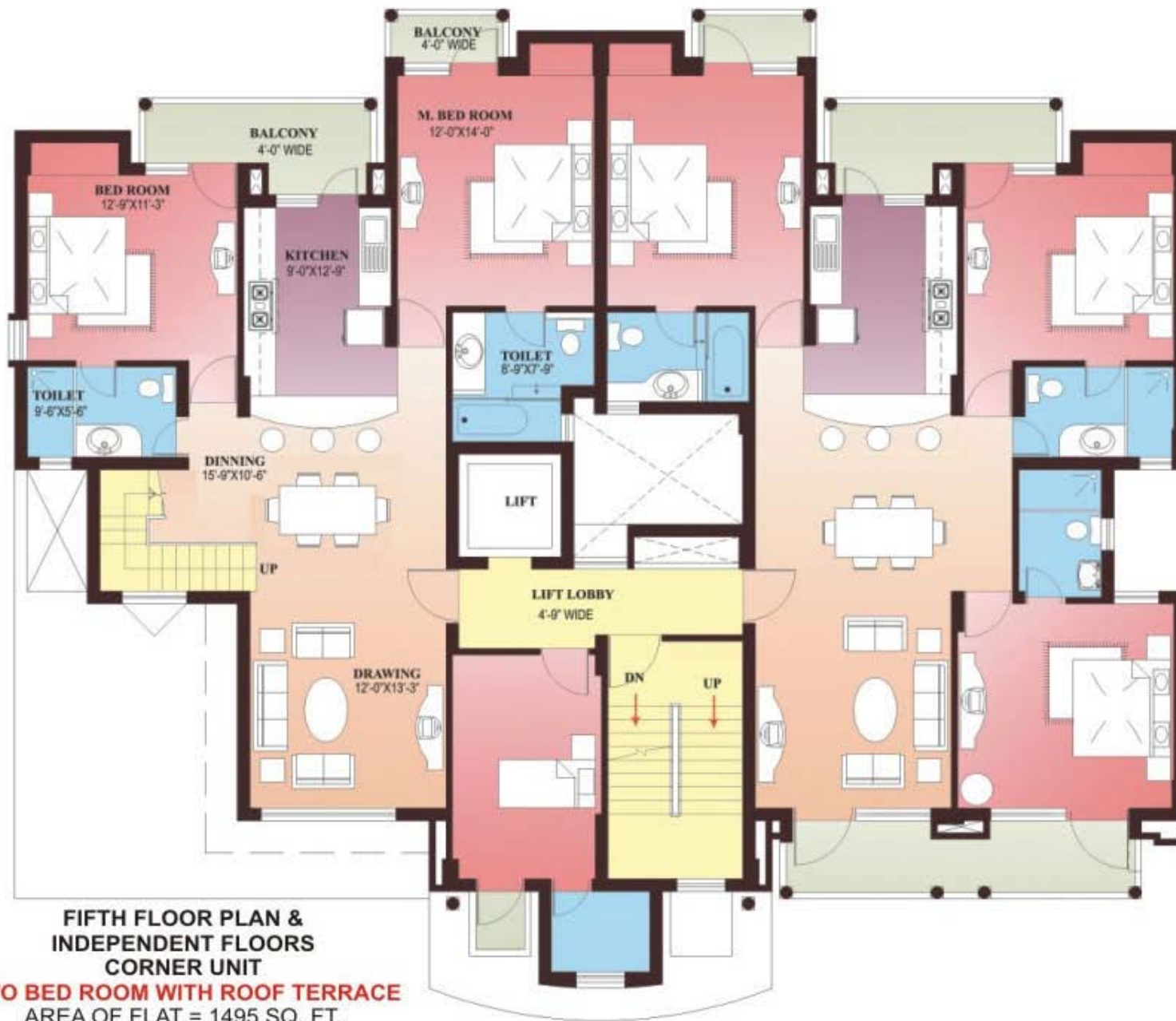
**FOURTH FLOOR PLAN &
INDEPENDENT FLOORS
ATTACHED TO VILLA
CORNER UNIT
TWO BED ROOM WITH STUDY
AREA OF FLAT = 1785 SQ. FT.**





(EXCEPT DUPLEX UNIT - A804)

**FIFTH FLOOR PLAN &
INDEPENDENT FLOORS
ATTACHED TO VILLA
CORNER UNIT
TWO BED ROOM WITH ROOF TERRACE
AREA OF FLAT = 1495 SQ. FT.**



(EXCEPT DUPLEX UNIT - B1204, C104, 604, 704, D504)



AREA OF UNIT (1)=2065 Sq. Ft.
AREA OF UNIT (2)=2080 Sq. Ft.



**17TH FLOOR PLAN-T4 & T5
TOWERS
THREE BED ROOM WITH SERVENT ROOM**

AREA OF UNIT (1)=2065 Sq.Ft.

AREA OF UNIT (2)=2080 Sq.Ft.

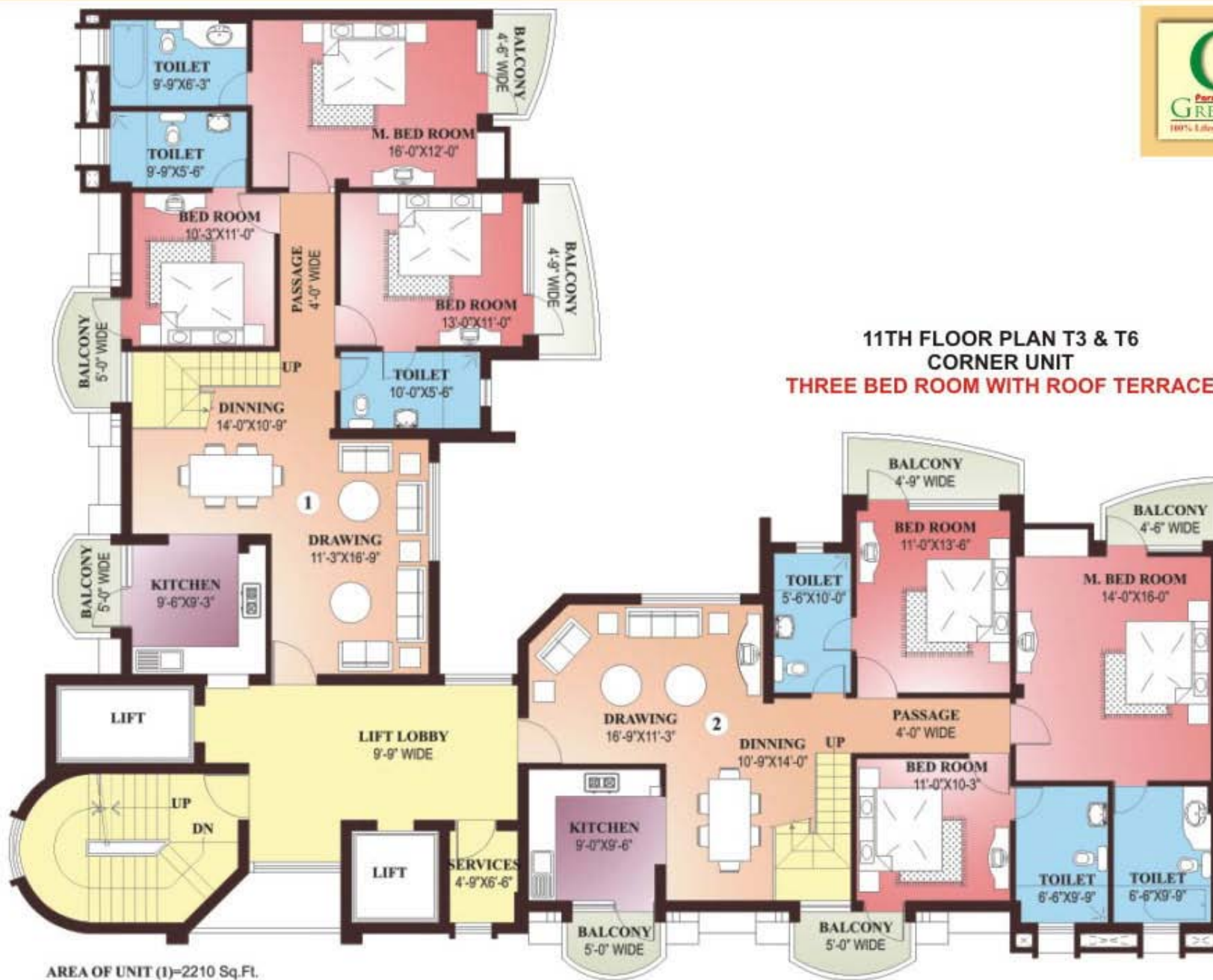
AREA OF UNIT (1)=2070 Sq.Ft.
AREA OF UNIT (2)=2055 Sq.Ft.



**11TH FLOOR PLAN - T2 & T7
TOWERS**
THREE BED ROOM WITH ROOF TERRACE

AREA OF UNIT (1)=2070 Sq.Ft.
AREA OF UNIT (2)=2055 Sq.Ft.

**11TH FLOOR PLAN T3 & T6
CORNER UNIT
THREE BED ROOM WITH ROOF TERRACE**

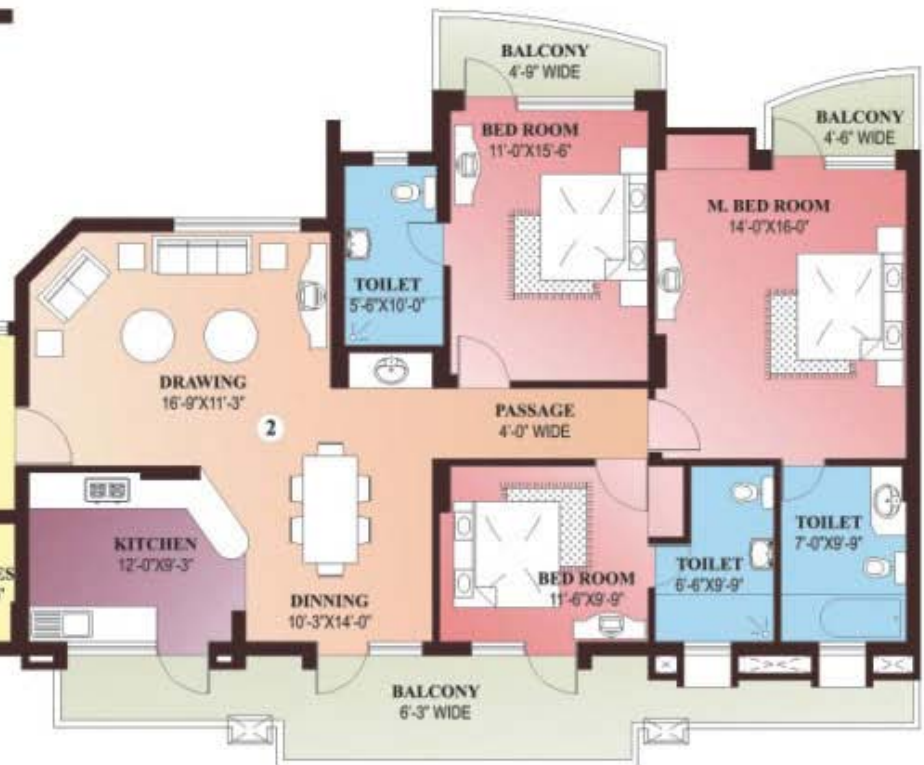


AREA OF UNIT (1)=2210 Sq.Ft.
AREA OF UNIT (2)=2285 Sq.Ft.



AREA OF UNIT (1)=1945 Sq.Ft.
AREA OF UNIT (2)=2020 Sq.Ft.

10TH FLOOR PLAN - T3 & T6 CORNER TOWER THREE BED ROOM UNIT



Villa Layout
Total Area: 7415.26 Sq. Ft.

Basement Floor Plan (1406.26 Sq. Ft.)



First Floor (1784 Sq. Ft.)



Ground Floor Plan (2517 Sq. Ft.)



Second Floor (1271 Sq. Ft.)



Specifications

Flooring

Italian marble/vitrified tiles flooring with Granite border in Drawing /Dining room & laminated wooden flooring in 3 Bedroom & vitrified tiles in other Bedroom, Non-skid tile flooring in Toilets & Kitchen. Decorative marble stone flooring in passage. Staircase will be a combination of white and Udaipur marble.

Doors & Windows

All windows in Teak/Champ with spirit polish having teak wood shutters duly polished or aluminium windows with sliding glass shutter or equivalent. All doors to be flush door of 35mm and main teak wood entrance door to be paneled on both sides duly polished. Additional iron door at the entrance. Grills in all windows.

Toilets

Provision of hot & cold water pipes, coloured Sanitary/Chinaware of branded make such as Hindustan/Parry/Cera or equivalent single level branded Chrome plated fixtures. Mirror of appropriate size in all Toilets. Glazed tiles upto ceiling with Towel rail etc. Bath Tub and Shower cubical in Toilet attached with master Bedroom.

Kitchen

Modular Kitchen polished Granite worktop, Stainless Steel sink with Drain board. Glazed tiles dado upto 2 ft. height over counter.

Hardware

Shutter hinges in brass. All other hardware in brass. All doors except those in Toilets & Kitchen to be provided with a mortice lock.

Internal Finishes

Acrylic paint/oil bound distemper in pleasing shades in Drawing /Dining Room and dry distemper in Bedrooms. POP cornices in Drawing/dining Room & all Bedrooms.

External Finishes

Textured finish

Electrical Work

Electrical work with copper wires in concealed PVC conduits. Provision shall be made for sufficient lighting & power points. Switches & Sockets. Telephone & TV points in each Bedroom, Drawing/Dining Room.

Electrical Fixtures

Fancy lights, fluorescent tubes in all Bedrooms, Drawing / Dining Room.

Wood Work	:	Stylish wood work in cubboards
Gas Supply	:	Provision for Piped gas supply
Drinking Water Supply	:	Through R.O. Plant
Connectivity	:	Broadband Internet connectivity

Note: Specifications are tentative which may vary as decided by the Company/Architect.

Thank you