

PAYMENT PLAN

Construction Linked Plan (CLP) Tower - D + G Structure Stilt + 30		Construction Linked Plan (CLP) Tower - A, E & F Structure Stilt + 35		Construction Linked Plan (CLP) Tower - B, C, H, J Structure Stilt + 23	
On Booking	10%	On Booking	10%	On Booking	10%
Within 45 Days from Booking	10%	Within 45 Days from Booking	10%	Within 45 Days from Booking	10%
On Completion of Rafting	10%	On Completion of Rafting	10%	On Completion of Rafting	10%
On Completion of 1st Basement	10%	On Completion of 1st Basement	10%	On Completion of 1st Basement	10%
On Completion of Ground Floor Roof	5%	On Completion of Ground Floor Roof	5%	On Completion of Ground Floor Roof	5%
On Completion of 2nd Floor Roof	5%	On Completion of 2nd Floor Roof	5%	On Completion of 2nd Floor Roof	5%
On Completion of 5th Floor Roof	5%	On Completion of 5th Floor Roof	5%	On Completion of 5th Floor Roof	5%
On Completion of 8th Floor Roof	5%	On Completion of 10th Floor Roof	5%	On Completion of 8th Floor Roof	5%
On Completion of 11th Floor Roof	5%	On Completion of 14th Floor Roof	5%	On Completion of 10th Floor Roof	5%
On Completion of 14th Floor Roof	5%	On Completion of 18th Floor Roof	5%	On Completion of 12th Floor Roof	5%
On Completion of 18th Floor Roof	5%	On Completion of 22nd Floor Roof	5%	On Completion of 15th Floor Roof	5%
On Completion of 22nd Floor Roof	5%	On Completion of 26th Floor Roof	5%	On Completion of 18th Floor Roof	5%
On Completion of 26th Floor Roof	5%	On Completion of 30th Floor Roof	5%	On Completion of 21st Floor Roof	5%
On Completion of Super Structure	5%	On Completion of Super Structure	5%	On Completion of Super Structure	5%
On Completion of External/Plaster/Primer	5%	On Completion of External/Plaster/Primer	5%	On Completion of External/Plaster/Primer	5%
On Offer of Possession	5%	On Offer of Possession	5%	On Offer of Possession	5%



The Islands

by GAURS

BE APART

DISCOVER THE DIFFERENCE BETWEEN
LIVING AND LIVING APART!

GAURS
your own world

 PROJECT RERA REGISTRATION NO.: UPRERAPRJ734569





LIVING APART IS A LANGUAGE
SHARED BY YOU AND NATURE AT ITS BEST.



WHEN LIFE AND LIFESTYLE BREATHE LUXURY,
THAT IS LIVING APART



WHERE YOU DON'T 'MOVE-IN'
YOU WALK-IN AND LIFE BEGINS

Unveiling Your Own Private Island



The lifestyle of those who Live Apart

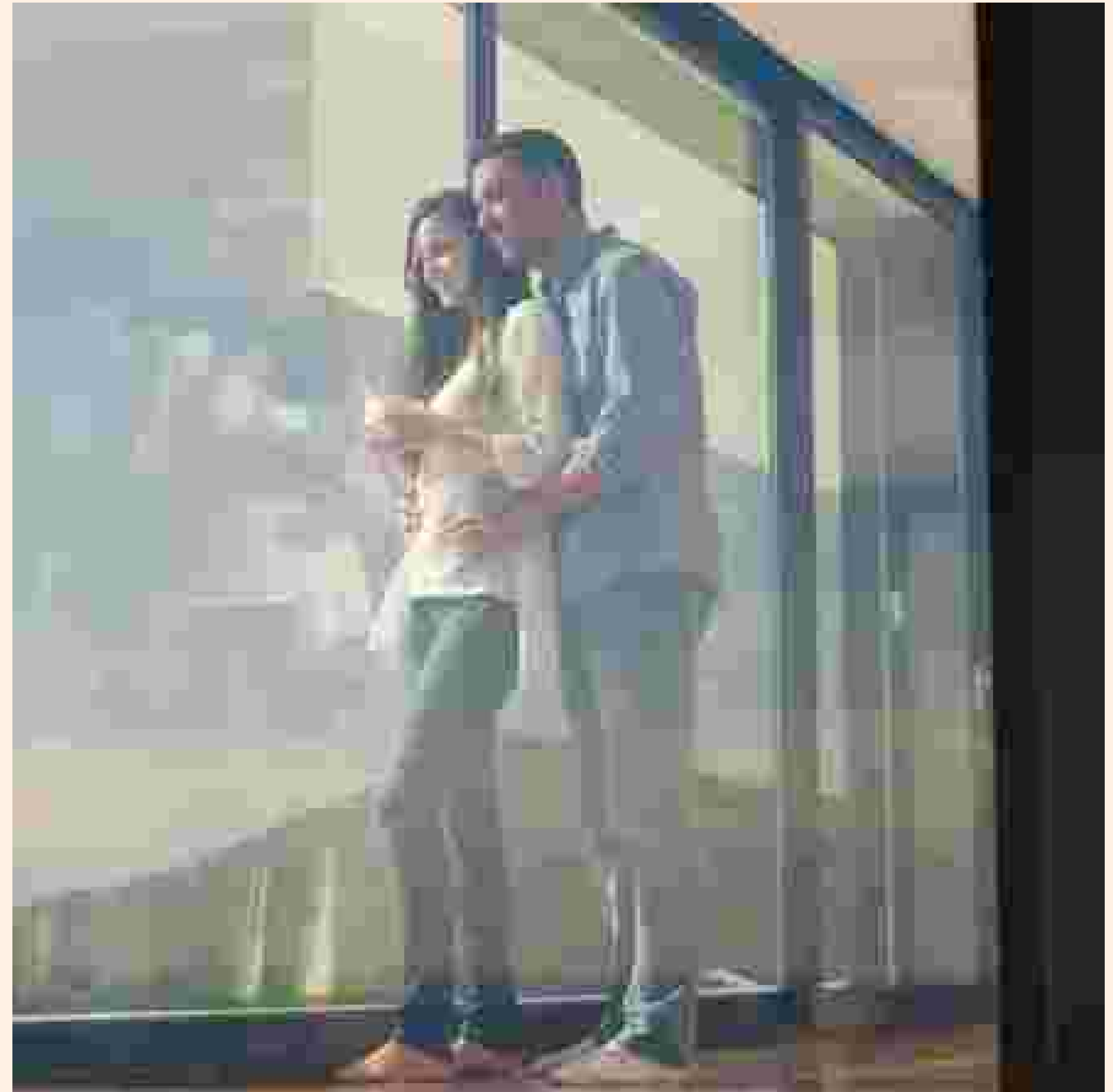
As you wander through the shade of a thousand trees, in the midst of nature, you smile and look back at your life. Every decision you made, through the trials, the tribulations, the promotions, the market-winning propositions, the highlights and the learnings, everything you have worked for is worth it, just for this moment.

Basking in the warmth of a Sunday sun, with your loved ones, you know that every moment is picturesque and every moment, is perfect. Everything you have done until this moment, to come to this height of excellence, is finally worth it.

You will remember that the promises you made to yourself and to your family have been fulfilled when they walk into your home and have a smile that is filled with happiness.

Everything you need, everything you desire, everything you ever wished for, is here.

This is the lifestyle of those who Live Apart.





An oasis of calm, at the epicentre of progress

The location of the epitome of Living Apart is nestled inside a place that you know so well, yet have not imagined to be a haven of solace.

We are talking about Greater Noida, the spotlight of India's burgeoning business enterprise. Developed as one of the largest industrial townships in Asia, Greater Noida is the crown jewel of progress and is envisioned to be India's smartest city in the National Capital Region. Home to the most modern urban development centre, this fast-developing nucleus of enterprise is the result of collaborative, far-sighted planning geared towards catapulting India's progress into the future.

Geared for aggressive entrepreneurial expansion in the near future, Greater Noida also has nature in full bloom.

- The city is already dotted by huge green cover, which is ever expanding.
- The carbon-footprint of industry is offset by an abundance of trees and it keeps the surroundings as a pollution-free area.
- The well-laid road network is already developed as beautiful tree-lined avenues making commuting a pleasure.

Even from the moment you land, get ready to be greeted by elegance. Just a small drive away, will be the Noida International Airport, slated to be India's largest airport, on the lines of the Zurich Airport in Switzerland. And numerous other investments by public and private enterprises have made the region a hotbed of progress.



Entry point of Greater Noida - Pari Chowk

Immerse yourself in Nature's Bounty



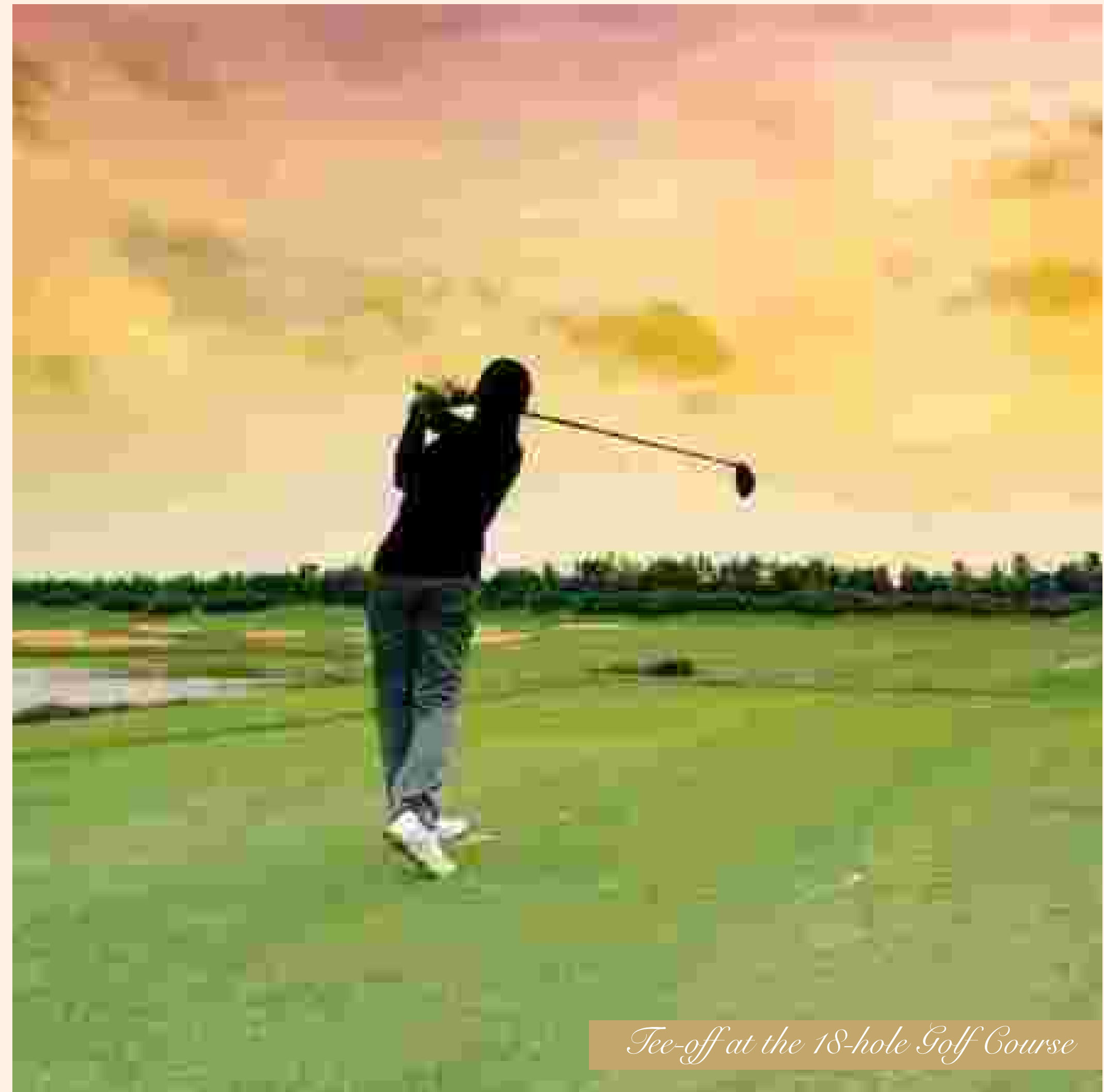


Tee-off a future of Living Apart

There's something about teeing-off, amidst the manicured greens, the warming sun and the calm, unpolluted breeze that seems to run from the horizon to you as a wave of calm. It is a different language, of fine living, sophisticated taste and conversations with people of class. Something as simple as drinking your favourite beverage becomes memorable.

Yes, we are talking about one of the largest integrated delivered townships - Jaypee Greens. It is home to a select few, residing in 452 acres of lush green surroundings. We have envisaged life for you in this picturesque township, as that is the correct meaning of Living Apart.

What's more, member exclusive clubhouses, banquet facilities, tempting eateries, spas & health clubs, a golf academy and a host of recreational options invite you to live life, apart. Live, unwind, rejuvenate in exclusive spa resorts, social clubs, integrated sports complexes and more, and facilities made for the whole family such as recreational parks, schools, gardens, jogging tracks that elevate lifestyle here to a privileged stature and your glorious legacy for generations to come.



Tee-off at the 18-hole Golf Course



A neighbourhood of exclusivity.

Jaypee Greens, an expansive 452 acre township open to only an exclusive few, who live life to their fullest. This uber elite location with lush-greenery and luxe-living that stretches out as far as the eye can see.

Amidst this integrated township, you will find one of the world's longest 18 hole golf-course, designed by none other than Greg Norman, the biggest name in the world, for Golf Course Designs. He is the one who has made world-famous golf-courses and has rated this among the Top Ten Golf Courses in the world. This unique course is one of the world's most exclusive in the world.

Playing at the fairway, are the whos-who and stalwarts of business, entertainment and expats, who call this place home.

When you choose this locale, you are choosing to be part of the choicest few, who elevate living into one that is exclusive and luxurious.

Wake up to this breathtaking view at the golf course everyday

Perfect Vibe for Good Times



Move-in to a Ready-to-move-in Lifestyle

Forget about the long-drawn process of moving into a new house and the headaches associated with it. Here, all you need to do is walk in and start your own lifestyle with your family. It is a place where there is nobody to intrude on you, on your thoughts, your moments and your life.

- One of the lowest per family acre life gives you a feeling of exclusivity and being apart.
- The massive population of different species of trees at the golf course and the numerous parks will give you company at all times.
- Where you share space with families of birds, whose language you will almost start to speak as a universal one.

With this ready-to-move-in lifestyle, you will also embrace a neighborhood that is elite, welcomes you with a smile and an atmosphere of friendliness regardless of age. Where your kids can actually have incredible, memorable childhood with the never-ending spark of life. Imagine a lifestyle where all this is possible and more!

In the vicinity too, you have everything you and your family need, from temples to school & colleges, sports facilities to spa resorts, green cover like you have never seen before and a magnificent golf-course. Come back to nature and transform your 'life', into a lifestyle of peace with luxury. A lifestyle that starts as soon as you decide, "Yes, this is what I want for my family."

All Actual Images



Crafted for fine living at the Township

18 HOLE GOLF COURSE

TEMPLE

SPORTS COMPLEX - THE ATLANTIC

BOOMERANG CLUB

GOLF PRACTICE RANGE

GATED SECURITY

HELIPAD

SCHOOLS

HOSPITALS

TOWN CENTRE

GOLF & SPA RESORT

FIRE STATION

The expanse of living apart

READY TO MOVE-IN LIFESTYLE

COMMUNITY LIVING

UNDISTURBED, VAST OPEN SPACES

AMPLE GREEN SPACE AND WATER BODIES

UNPOLLUTED, PURE AIR

AN ATMOSPHERE OF CALM BUILT AMIDST NATURE

*Actual Site Photograph of Jaypee Greens Township. This facility is maintained and governed by the Rules and Regulations of Jayprakash Associates Limited (JAL). same can be utilized as per the prevailing policies of JAL.



*Unveiling
A Life Of Living Apart.*

ENTER TO SLOW DOWN TIME.

TO REFRESH, REJUVENATE AND RECONNECT.

SETTLE-IN TO MAKE EVERY MOMENT LAST FOREVER.

WHERE YOUR LOVED ONES THANK YOU WITH THEIR
SMILES.

WHERE YOU WALK WITH YOUR DREAMS AND THOUGHTS.

ENCOURAGED BY THE WHISPERS OF NATURE.

WITH THE SUNSET

BRINGS A NEW CHARM OF NIGHT,

THAT THE CITY SELDOM GIFTS.

BE BORN AGAIN IN THE MORN,

INVIGORATED BY THE KNOWLEDGE

THAT THIS HAVEN WAS MADE, JUST FOR YOU.

EVERYTHING AT THE ISLANDS SETS THE GOLD
STANDARD OF HIGH-LIVING THAT TAKES SPECTACULAR
NATURAL SETTINGS AND ELEVATES IT WITH LUXURY
MADE FOR ONLY THE MOST EXCLUSIVE.

IT IS NAMED THE ISLANDS BECAUSE THERE IS NOTHING
IN THE VICINITY THAT COMPARES TO THE INCREDIBLE,
CURATED LIFESTYLE OF THOSE WHO LIVE INSIDE. IT IS
AN OPTION AVAILABLE ONLY TO A FEW, AND A LIFE
THAT EVEN FEWER WILL BE ABLE TO LIVE.
THE ISLANDS, IS WHERE YOU LIVE APART IN EVERY
FACET OF LIFE.

Presenting





The Islands

by GAURS

BE APART

An exquisite masterpiece

The Islands by Gaur are made to indulge you in grandeur and understated elegance. Every facet of these bespoke residences have been designed with taste, made with nature, made just for you. It is a masterpiece of planning, execution and refinement; and is the result of almost 3 decades of committing ourselves to delivering excellence.

*An iconic landmark of luxury,
amid greens made for the exclusive*



Actual Image of Golf course and township, 3D rendered elevation image (Artistic Impression) of the Project

HIGHLIGHTS OF THIS LANDMARK OF LUXURIOUS LIVING

- Custom-made residences and lifestyle choices, in the midst of the luxurious Integrated Township
- 9 heaven-piercing towers, up to 37 storeys. This boulevard of towers create an unmistakable landmark that can be seen and recognised not only by its enormity, but also its neo-classical Roman & Gothic influence of architecture.
- Each of the 506 condominiums are made up of large, inviting spaces from 4BHK to 6BHK, for you to live up every moment, in luxurious bliss.
- The residences are so exclusive that we have designed only 2 Condominiums on each floor to ensure utmost privacy. And the best part is that all the condominiums face the lush green beautiful golf course on one side and the expansive Pari Chowk on the other side. You will always have an uninterrupted horizon to gaze at.
- We have also curated bespoke large residences especially for the elite few which are exquisite duplexes, penthouse suites and large terrace homes that match your effortless style and excellent taste.

View from Golf Course

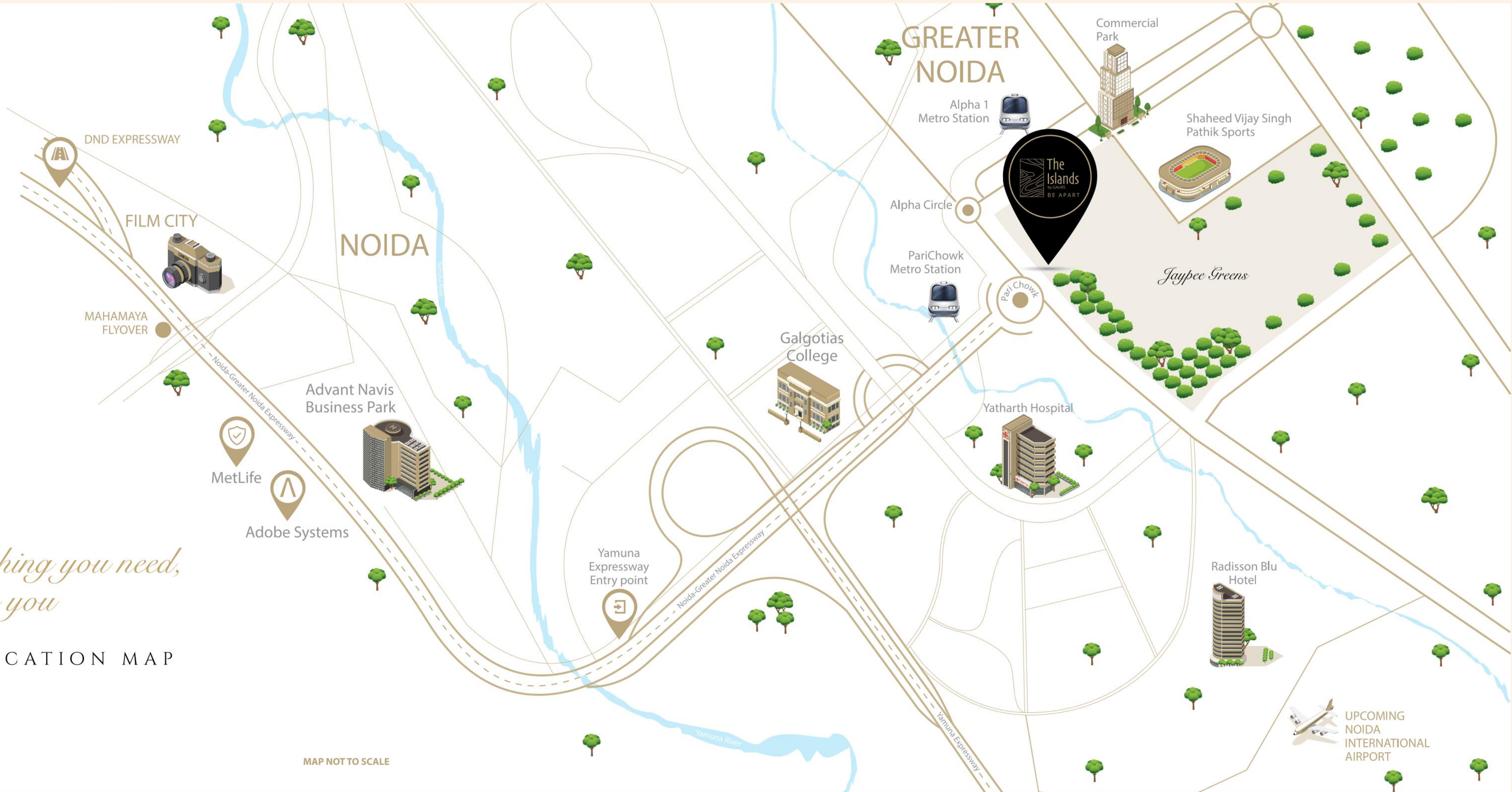
Trailblazer in architectural design

The
Islands
by GAURS
BE APART

Night View from Pari Chowk

Artistic Impression

DELHI



*Everything you need,
reaches you*

THE LOCATION MAP

MAP NOT TO SCALE

UPCOMING
NOIDA
INTERNATIONAL
AIRPORT



The
Islands
by GAURS
BE APART

LAYOUT PLAN



 The
Islands
by GAURS
BE APART

*Curated residences amidst nature
makes every view refreshing*

The Ivory Coast

*Where life turns
into an active lifestyle.*

The Ivory Coast is the foundation of living apart. Where luxurious amenities and an active lifestyle come together. This is the place, where life at The Islands begins and awaits you at any time of day or night. With activity zones for you and your family, walking track, water bodies, open gym and more, come rejuvenate & connect with friends and family in a way that transcends life into lifestyle.

- OPEN GYM
- PRETEEN PLAY AREA
- MOUNDS
- SIT OUT/CHILLING PAD
- YOGA & MEDITATION AREA
- CLIMBING WALL
- SENIOR CITIZEN ZONE
- WALKING TRACK
- PET PLAY AREA
- KIDS PLAY AREA
- WATER BODIES



The Ivory Coast

OPEN GYM



SIT OUT/CHILLING PAD



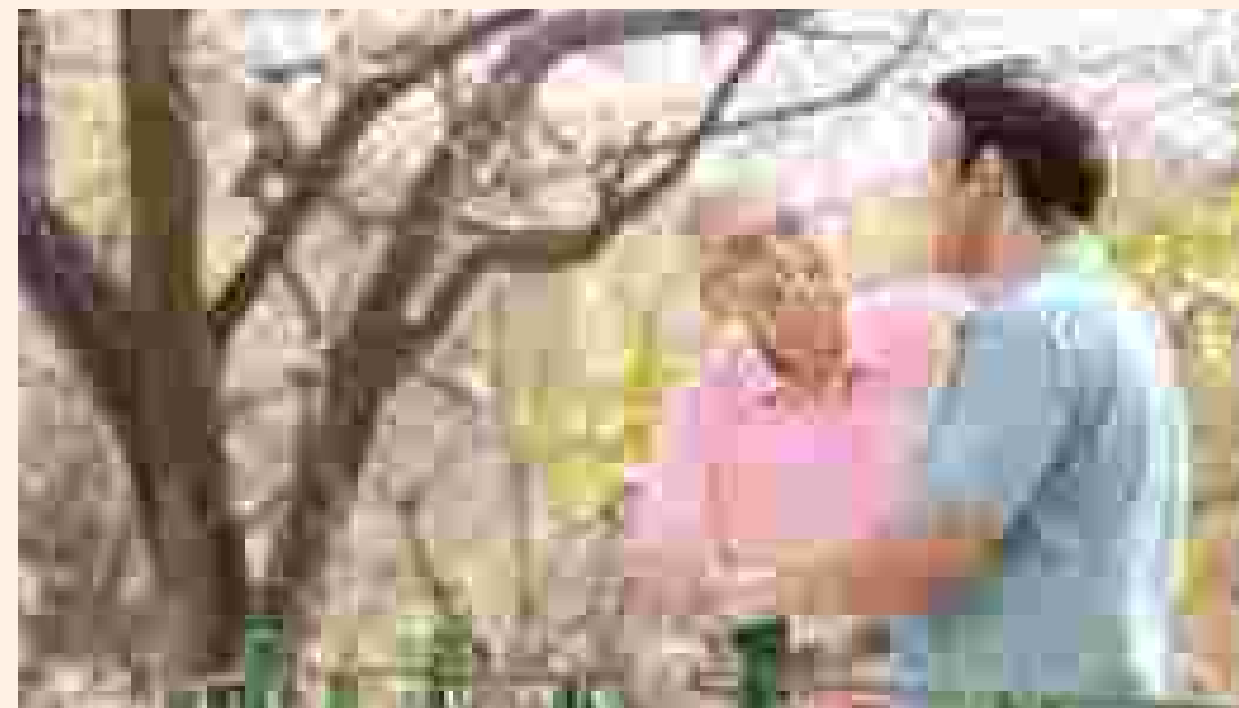
KIDS PLAY AREA



WALKING TRACK



SENIOR CITIZEN ZONE



PET PLAY AREA



The Gold Coast

THE CLUBHOUSE

*A connection zone for
you and your family*

Good times begin at The Gold Coast, your clubhouse at The Islands. A spectacle in itself with an area of about 2787 sq.mt. (30000 sq.ft.), it is home to everything you need for a weekend, full of relaxation and rejuvenation for your whole family. When you are here, there will be no distractions, just the peace of being in the moment. It is a connection zone meant only for you and your family.

- INDOOR HEATED POOL
- KIDS POOL / LAP POOL / FAMILY POOL
- JACUZZI
- CIGAR LOUNGE/ SPORTS BAR/CARD ROOM
- PATISSERIE & COFFEE SHOP
- GUEST ROOMS
- VIRTUAL CLASSROOM
- KIDS PLAY AREA
- GYMNASIUM
- MASSAGE ROOM
- SAUNA & STEAM
- GET-TOGETHER PARTY SPACE
- BUSINESS CENTER
- LIBRARY
- CONFERENCE ROOM
- YOUNGSTER'S ZONE
- MINI HOME THEATRE
- MEDICAL CENTRE / FOOD HALL
- SALON



*Indoor
Heated Pool*

The Gold Coast

Patisserie & Coffee Shop



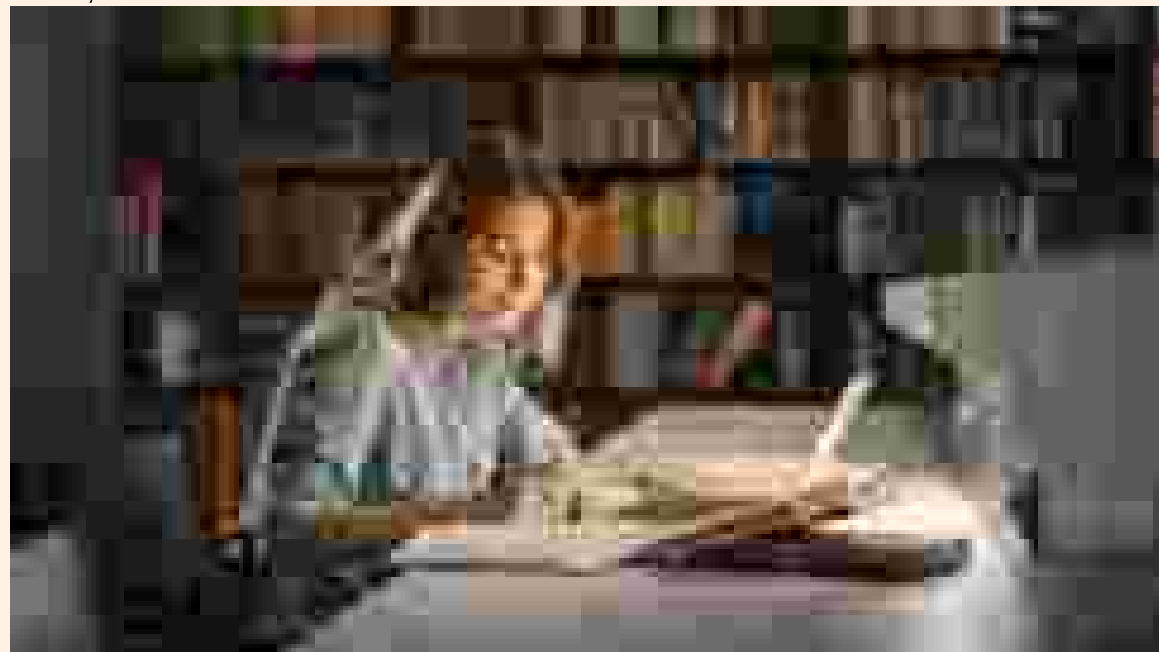
Conference Room



Steam & Sauna



Library



Gymnasium



Sports Bar



Youngster's Zone



Indicative Images, All the above images are for reference only.

Indicative Images, All the above images are for reference only.

The Orbit

THE SKYWALK

*Here, you don't just look up,
you revel among the clouds*

The Skywalk is a glorious jewel on top of The Islands that connect all buildings and provide a place of recreation & rejuvenation among the clouds. Situated just above the 23rd floor, about 90 meters above the ground level, connecting 8 towers and working as a central nervous system, this inimitable skywalk is replete with luxuries that you just keep coming back to. Everything you need to relax and rejuvenate is available at this island in the sky. From the walking track, to the Celebration Pavillion for an evening of revelry, or even the Library where you can get your daily dose of quiet reading, you will form fond memories that keep you coming back for more.

- PADDLE COURT
- FESTIVAL GARDEN
- MULTIPURPOSE COURT
- WORKSTATION PODS
- CELEBRATION PAVILLION
- OPEN AIR THEATER
- JOGGING / WALKING TRACK
- LIBRARY & READING ZONE
- OPEN WATER BODIES
- TOT LOT AREA
- OBSERVATORY DECK



View from the Skywalk

Walking Track



Paddle Court



The Orbit

THE SKYWALK

Observatory Deck



Workstation Pods



Open Air Theater



Celebration Pavillion



Towering gloriously above the crowd

The
Islands
by GAURS
BE APART



Pari Chowk Side

Artistic Impression



The
Islands

by GAURS

BE APART

*Your inner sanctum
of Living Apart*

THE INTERIORS

*Here, nature is
the foundation of living.*

The residences at The Islands by Gaur are surrounded by a huge expanse of nature as far as the eye can see. The sights and sounds of nature welcome you, every time you open one of the many balcony doors. Wherever you see, nature looks right back at you. Here, every morning you can open doors to a more beautiful sunrise with a cup of coffee and your loved ones or watch the sunset hand-in-hand with your better half. The views from these residences have been crafted to make just these moments even more special.

To say the apartments of The Islands by Gaur are meant to live larger than life is an understatement. Each floor has just two luxurious residences, each with the breathing space of the entire floor. The living spaces themselves are designed to the exact specifications of your bespoke life. Everything you touch in these residences is an experience. With finely crafted details in every corner, objects transform themselves from the mundane to the eloquent. From expansive dining rooms, to enormous walk-in closets to balconies with huge vistas of the surroundings, a lifestyle of luxury, made just for you, awaits you. Come alive, every day.



Lobby Area - Enter a world of grandeur with Double Height Tower Lobby



Dining Area - Fine Dining Spaces to create Gastronomic Memories

Artistic Impression, image for reference only



Living Room - Luxury Space to Chill & Relax

Artistic Impression, image for reference only



Master Bedroom - Wake up to A Mesmerizing View everyday



Kitchen - Expansive Cooking Zone to prepare meals with Love

Artistic Impression, image for reference only



Bathroom - Modern Washrooms with ample spaces

Artistic Impression, image for reference only



The
Islands

by GAURS

BE APART

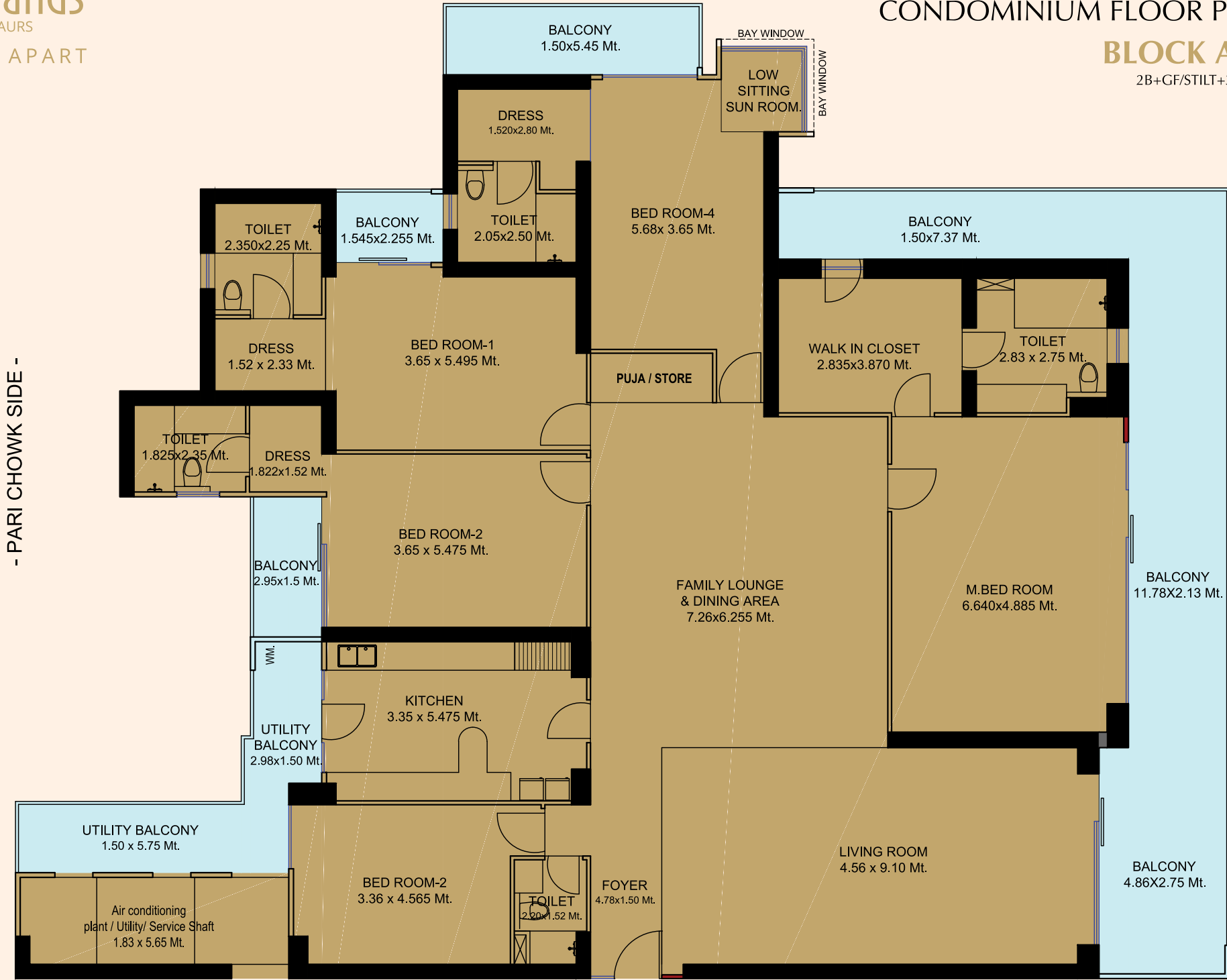
Be floored by exclusivity

THE FLOOR PLANS

CONDOMINIUM FLOOR PLAN

BLOCK A-02

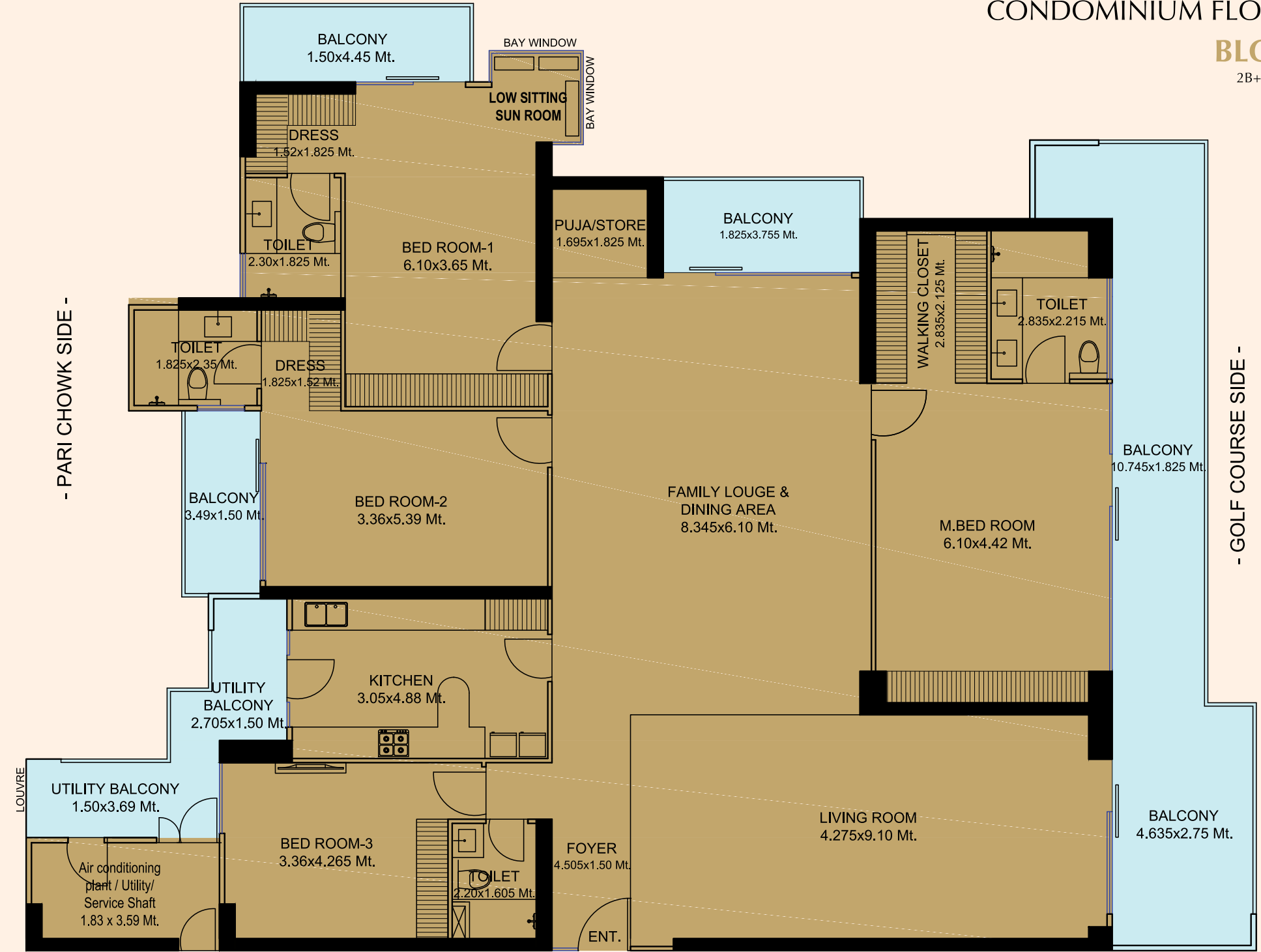
2B+GF/STILT+37 Floors



CONDOMINIUM FLOOR PLAN

BLOCK I-02

2B+GF/STILT+23 Floors



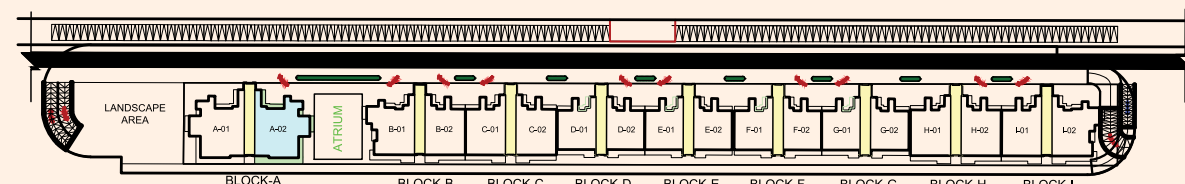
Disclaimer: Total Area: The total area (loading of other constructed areas including the constructed common areas over the carpet area which is duly mentioned in the layout plan of the respective condominium. Carpet Area: The carpet area means the net usable floor area of a condominium, excluding the area covered by the external walls, areas under services shafts, exclusive balcony or verandah area and exclusive open terrace area, but includes the area covered by the internal partition walls of the apartment. Scales for conversions: Area 1,000 Sq.mt. = 10,764 Sq.ft., Dimension 304.8 mm=1.0 Foot.

Disclaimer: Total Area: The total area (loading of other constructed areas including the constructed common areas over the carpet area which is duly mentioned in the layout plan of the respective condominium. Carpet Area: The carpet area means the net usable floor area of a condominium, excluding the area covered by the external walls, areas under services shafts, exclusive balcony or verandah area and exclusive open terrace area, but includes the area covered by the internal partition walls of the apartment. Scales for conversions: Area 1,000 Sq.mt. = 10,764 Sq.ft., Dimension 304.8 mm=1.0 Foot.

FOYER + 5 BED ROOMS + LIVING ROOM + FAMILY LOUNGE & DINING AREA + PUJA / STORE + KITCHEN + 5 TOILETS + 3 WALK IN CLOSETS + DRESS + 5 BALCONIES + BAY WINDOW + UTILITY AREAS

CONDOMINIUM AREA DETAILS :-

CARPET AREA (As per the RERA act)	= 297.23 Sq.Mt. / 3199.45 Sq.Ft.
COVERED AREA	= 319.70 Sq.Mt. / 3441.22 Sq.Ft.
BALCONY AREA	= 79.20 Sq.Mt. / 852.50 Sq.Ft.
COMMON AREA (FLOOR)	= 45.63 Sq.Mt. / 491.11 Sq.Ft.
SALEABLE AREA	= 558.46 Sq.Mt. / 6011.26 Sq.Ft.

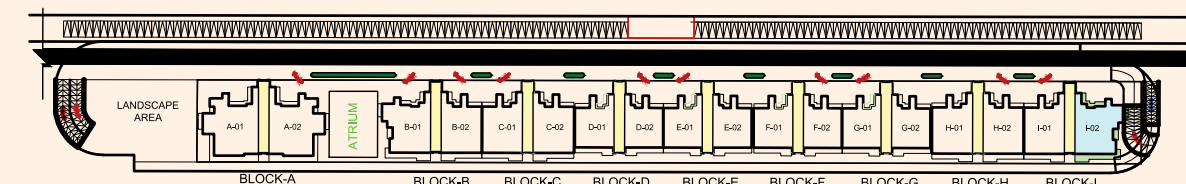


CLUSTER PLAN

FOYER + 4 BED ROOMS + LIVING ROOM + FAMILY LOUNGE & DINING AREA + PUJA / STORE + KITCHEN + 4 TOILETS + WALK IN CLOSETS + 2 DRESS + 5 BALCONIES + BAY WINDOW + UTILITY AREA

CONDOMINIUM AREA DETAILS :-

CARPET AREA (As per the RERA act)	= 246.88 Sq.Mt. / 2657.41 Sq.Ft.
COVERED AREA	= 258.38 Sq.Mt. / 2781.17 Sq.Ft.
BALCONY AREA	= 64.54 Sq.Mt. / 694.45 Sq.Ft.
COMMON AREA (FLOOR)	= 44.47 Sq.Mt. / 478.63 Sq.Ft.
SALEABLE AREA	= 452.09 Sq.Mt. / 4866.28 Sq.Ft.

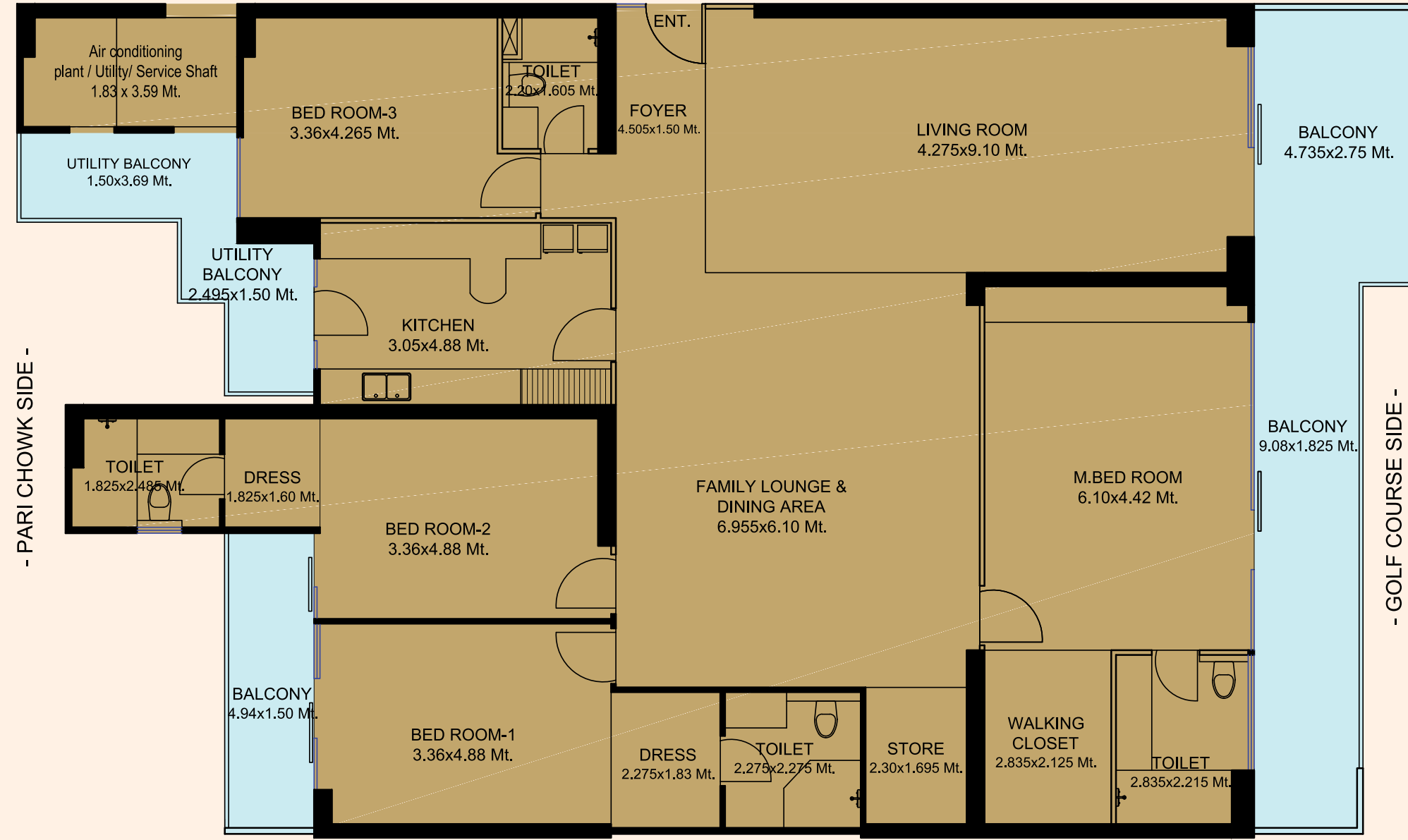
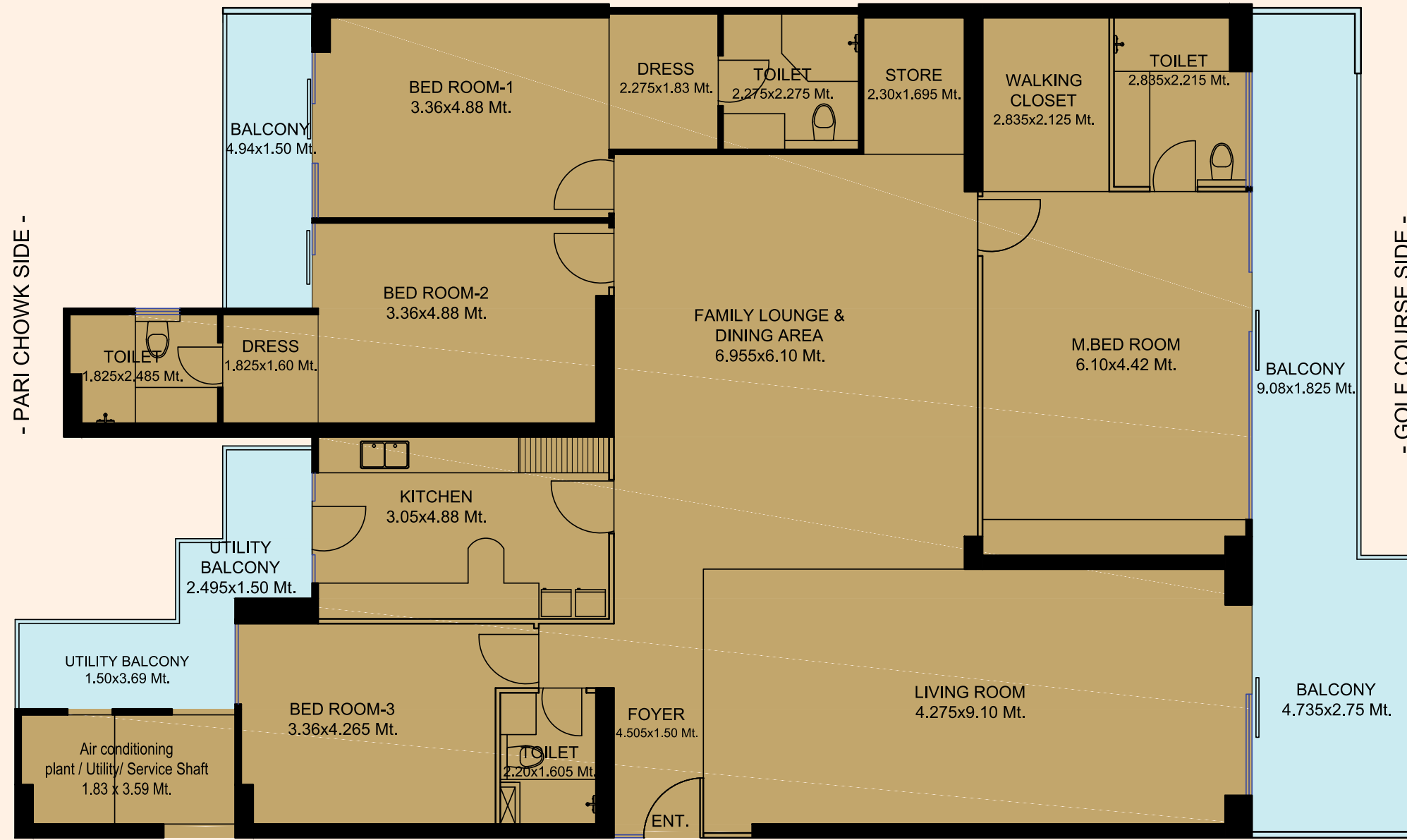


CLUSTER PLAN

CONDOMINIUM FLOOR PLAN
BLOCK H-01 & I-01
2B+GF/STILT+23 Floors

CONDOMINIUM FLOOR PLAN
BLOCK H-02
2B+GF/STILT+23 Floors

Disclaimer: Total Area: The total area including of other constructed areas including the constructed common areas over the carpet area which is duly mentioned in the layout plan of the respective condominium. Carpet Area: The carpet area means the net usable floor area of a condominium, excluding the area covered by the external walls, areas under services shafts, exclusive balcony or verandah area and exclusive open terrace area, but includes the area covered by the internal partition walls of the apartment. Scales for conversions: Area 1.000 Sq.mt. = 10,764 Sq.ft., Dimension 304.8 mm=1.0 Foot.

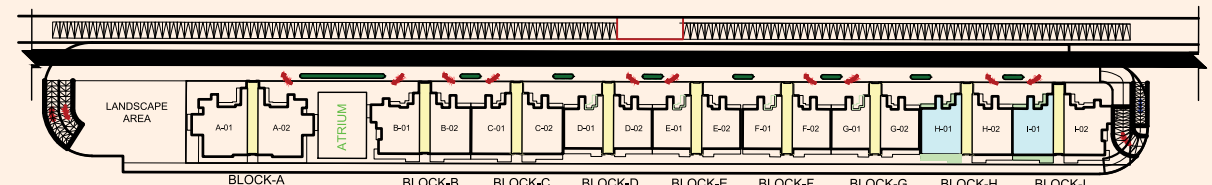


Disclaimer: Total Area: The total area including of other constructed areas including the constructed common areas over the carpet area which is duly mentioned in the layout plan of the respective condominium. Carpet Area: The carpet area means the net usable floor area of a condominium, excluding the area covered by the external walls, areas under services shafts, exclusive balcony or verandah area and exclusive open terrace area, but includes the area covered by the internal partition walls of the apartment. Scales for conversions: Area 1.000 Sq.mt. = 10,764 Sq.ft., Dimension 304.8 mm=1.0 Foot.

FOYER + 4 BED ROOMS + LIVING ROOM + FAMILY LOUNGE & DINING AREA + STORE + KITCHEN + 4 TOILETS + WALK IN CLOSETS + 2 DRESS + 3 BALCONIES + UTILITY AREAS

CONDOMINIUM AREA DETAILS :-

CARPET AREA (As per the RERA act)	= 229.77 Sq.Mt. / 2473.24 Sq.Ft.
COVERED AREA	= 241.66 Sq.Mt / 2600. 26 Sq.Ft.
BALCONY AREA	= 47.63 Sq.Mt. / 515.29 Sq.Ft.
COMMON AREA (FLOOR)	= 44.47 Sq.Mt. / 478.63 Sq.Ft.
SALEABLE AREA	= 405.01 Sq.Mt. / 4359.48 Sq.Ft.

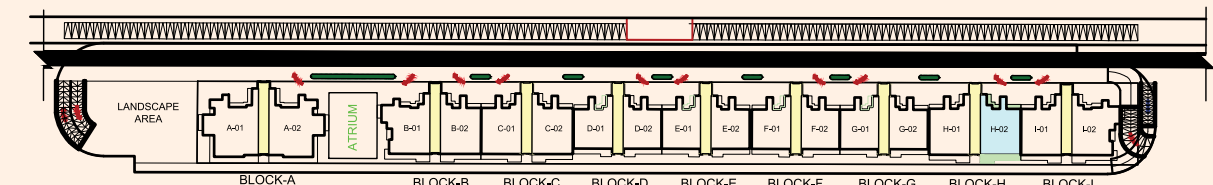


CLUSTER PLAN

FOYER + 4 BED ROOMS + LIVING ROOM + FAMILY LOUNGE & DINING AREA + STORE + KITCHEN + 4 TOILETS + WALK IN CLOSETS + 2 DRESS + 3 BALCONIES + UTILITY AREAS

CONDOMINIUM AREA DETAILS :-

CARPET AREA (As per the RERA act)	= 229.77 Sq.Mt. / 2473.24 Sq.Ft.
COVERED AREA	= 241.66 Sq.Mt / 2600. 26 Sq.Ft.
BALCONY AREA	= 47.63 Sq.Mt. / 515.29 Sq.Ft.
COMMON AREA (FLOOR)	= 44.47 Sq.Mt. / 478.63 Sq.Ft.
SALEABLE AREA	= 405.01 Sq.Mt. / 4359.48 Sq.Ft.



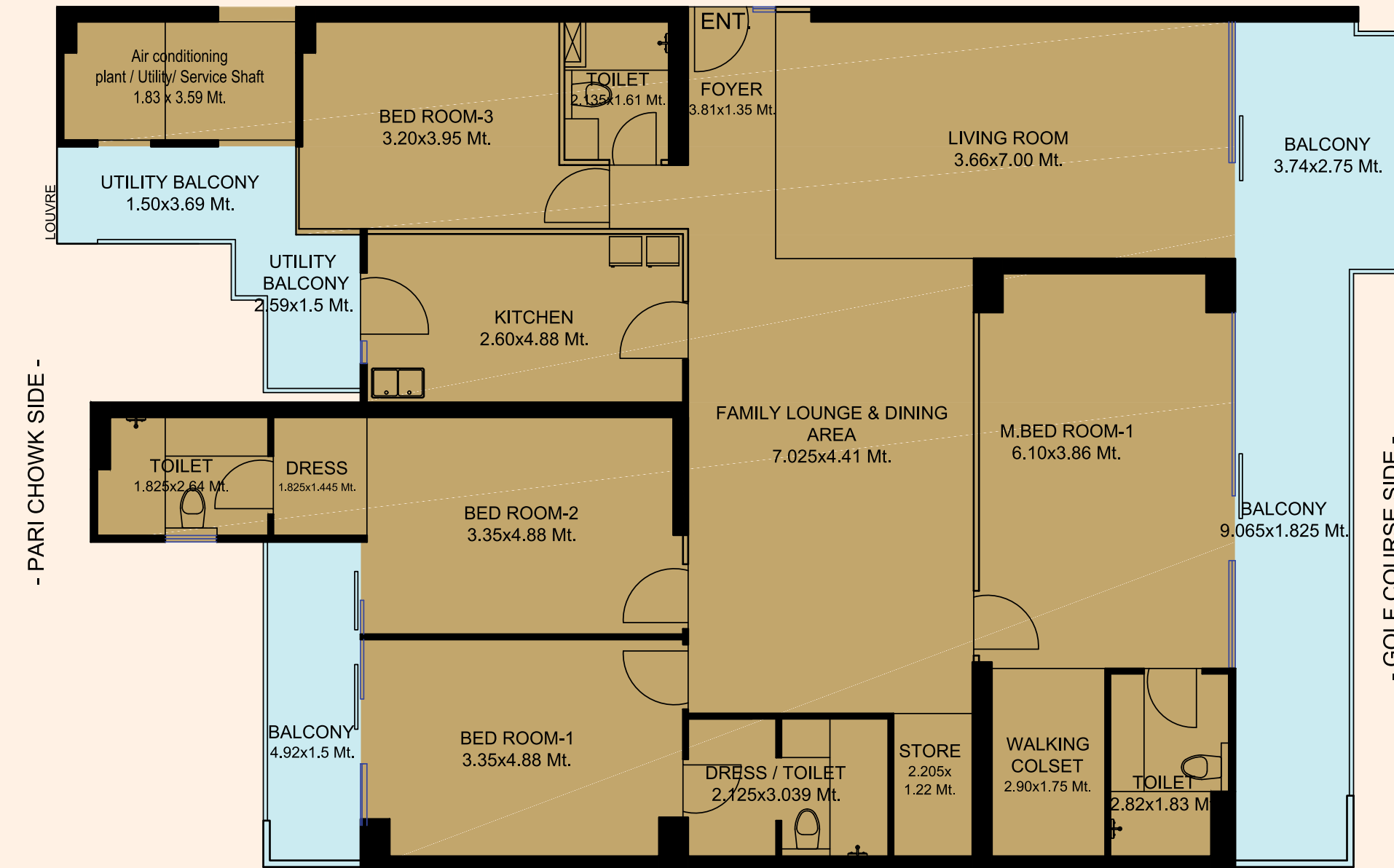
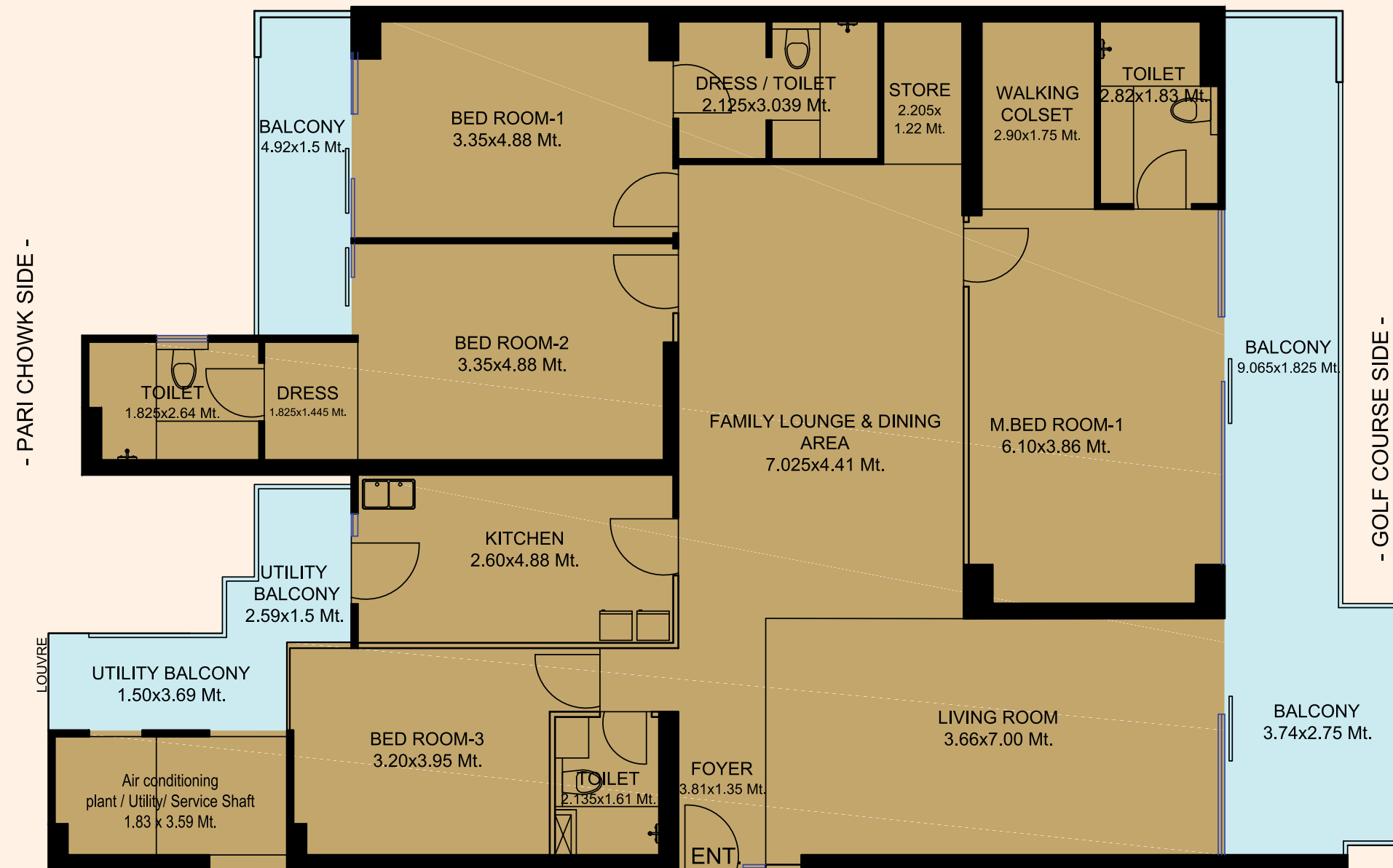
CLUSTER PLAN

CONDOMINIUM FLOOR PLAN
BLOCK F-02 & G-02
2B+GF/STILT+35 Floors +1 Services Floor

CONDOMINIUM FLOOR PLAN
BLOCK G-01
2B+GF/STILT+35 Floors +1 Services Floor

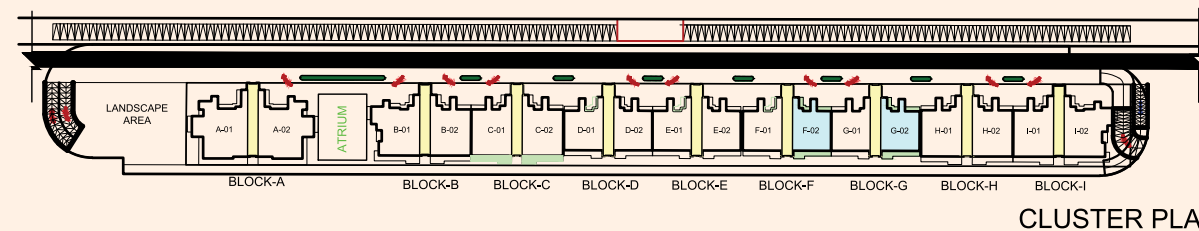
Disclaimer: Total Area: The total area (loading of other constructed areas including the constructed common areas over the carpet area which is duly mentioned in the layout plan of the respective condominium. Carpet Area: The carpet area means the net usable floor area of a condominium, excluding the area covered by the external walls, areas under services shafts, exclusive balcony or verandah area and exclusive open terrace area, but includes the area covered by the internal partition walls of the apartment. Scales for conversions: Area 1,000 Sq.mt. = 10,764 Sq.ft., Dimension 304.8 mm=1.0 Foot.

Disclaimer: Total Area: The total area (loading of other constructed areas including the constructed common areas over the carpet area which is duly mentioned in the layout plan of the respective condominium. Carpet Area: The carpet area means the net usable floor area of a condominium, excluding the area covered by the external walls, areas under services shafts, exclusive balcony or verandah area and exclusive open terrace area, but includes the area covered by the internal partition walls of the apartment. Scales for conversions: Area 1,000 Sq.mt. = 10,764 Sq.ft., Dimension 304.8 mm=1.0 Foot.



FOYER + 4 BED ROOMS + LIVING ROOM + FAMILY LOUNGE & DINING AREA + STORE + KITCHEN + 4 TOILETS + WALK IN CLOSETS + 2 DRESS + 3 BALCONIES + UTILITY AREAS

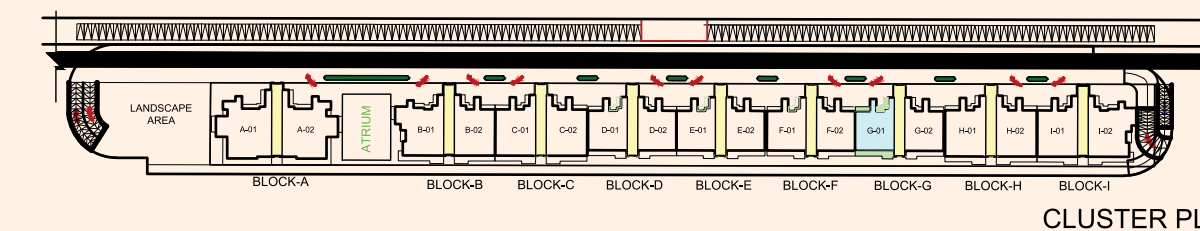
CONDOMINIUM AREA DETAILS :-	
CARPET AREA (As per the RERA act)	= 188.89 Sq.Mt. / 2033.21 Sq.Ft.
COVERED AREA	= 200.06 Sq.Mt. / 2152.64 Sq.Ft.
BALCONY AREA	= 44.35 Sq.Mt. / 477.20 Sq.Ft.
COMMON AREA (FLOOR)	= 45.09 Sq.Mt. / 485.30 Sq. Ft.
SALEABLE AREA	= 342.17 Sq.Mt. / 3681.79 Sq.Ft.



CLUSTER PLAN

FOYER + 4 BED ROOMS + LIVING ROOM + FAMILY LOUNGE & DINING AREA + STORE + KITCHEN + 4 TOILETS + WALK IN CLOSETS + 2 DRESS + 3 BALCONIES + UTILITY AREAS

CONDOMINIUM AREA DETAILS :-	
CARPET AREA (As per the RERA act)	= 188.89 Sq.Mt. / 2033.21 Sq.Ft.
COVERED AREA	= 200.06 Sq.Mt. / 2152.64 Sq.Ft.
BALCONY AREA	= 44.35 Sq.Mt. / 477.20 Sq.Ft.
COMMON AREA (FLOOR)	= 45.09 Sq.Mt. / 485.30 Sq. Ft.
SALEABLE AREA	= 342.17 Sq.Mt. / 3681.79 Sq.Ft.



CLUSTER PLAN

DETAILS OF CONDOMINIUM APARTMENTS

Total No. of Units	- 506
Total No. of Block	- 9
HEIGHT	
Block A	- 3.9 mt Floor to Floor
Block B to I	- 3.6 mt Floor to Floor

Specifications

DOORS AND WINDOWS

External	- Aluminium/uPVC Sliding/Openable doors & windows
Internal	- Elegant doors in polish / deco paint fixed in hardwood

RAILING

Balcony	- Glass railing
Staircase	- Mild steel railing

POP WORK

Internal	- Good quality POP, False ceiling in all rooms and drawing, dining
----------	--

SECURITY

Internal	- Video Intercom Phone
----------	------------------------

WALL FINISH

External	- Elegant finish with high quality texture paint
Internal	- All internal walls of rooms, drawing, dining will be painted using OBD

WOODWORK

Wardrobe	- In all dressing rooms
----------	-------------------------

SANITARY WORK

Internal	- Piping Corrosion free CPVC pipes and fittings
Fittings	- All taps and fittings of reputed brands in C.P., Wash Basins, Wall mounted W/C of reputed brands

FLOORING

Drawing	- Imported marble
Dining	- Imported marble
Kitchen	- Vitrified tiles
All Bedrooms	- Laminated Wooden Flooring
Balcony	- Anti-skid tiles
Toilets	- Vitrified tiles

WIRING & SWITCHES

Wiring	- Fire resistant copper wiring in concealed PVC conduits
Switches	- Modular switches and sockets in adequate numbers
TV Points	- In all rooms
Tel. Points	- In all rooms

AC & GEYSERS

VRV / Split ACs	- In bedrooms, D/D, Kitchen
Geysers	- In Toilets & Kitchen

ELECTRICAL FITTINGS

Exhaust Fan Light	- In Kitchen & Toilets
	- Fixtures Ceiling lights in drawing room & master bedroom
Fans	- In bedrooms, D/D and utility
External	- Adequate lighting in common areas

KITCHEN

Counter	- Kitchen counter with stainless steel sink fitted with R.O. Hob, Chimney with exhaust pipe
Wood Work	- Modular Cabinet
Wall Tile	- Designer ceramic tiles upto 2ft. above working counter

Every brick a stepping stone to crafting more luxurious lives.

At Gaur Group, the pinnacle of luxury is not just a construction but a quest for ever-better life experiences transformed into memories. With every property, our craft of luxury gets better refined so that those who live in our properties live exceptional lives, that is priceless, both in terms of life and lifestyle. Each of our 'life-craftsmen' are chosen for their exclusive capability of creating spaces that exceed expectations for a luxurious life.

Welcome to a world of luxury, welcome to the legacy of Gaur.



Milestones we are proud of

35 DELIVERED
RESIDENTIAL
PROJECTS

30 DELIVERED
COMMERCIAL
PROJECTS

3 DELIVERED
TOWNSHIP
PROJECTS

2 DELIVERED
RETAIL
PROJECTS (MALLS)

4 GAURS
INTERNATIONAL
SCHOOL

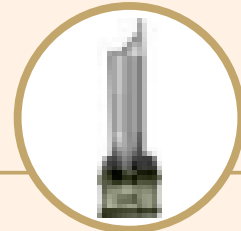
24 ONGOING
RERA REGISTERED
PROJECTS



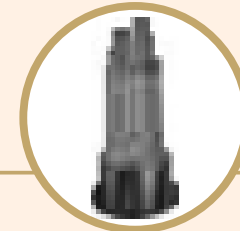
Ever since its inception in the year 1995, Gaur's has been revered as an icon of excellence in the world of real estate. With a burgeoning list of residential projects that encompass high end apartments to highly affordable accommodations occupied by thousands of happy families, Gaur's stress on customer's trust has become the winning mantra. The pointed, unerring focus on creating a better tomorrow has been the driving force at Gaur's. It is our foresight, eye for perfect locations and excellence in execution that has earned us a much-deserved success throughout our long journey. And armed with the confidence and verve to enrich lives, one can safely say that the future belongs to Gaur's.



SMART CITY EMPOWERING INDIA AWARDS 2020
BEST SMART CITY
DEVELOPER OF THE YEAR
- GAURSONS INDIA



CNBC AWAAZ REAL ESTATE AWARDS 2018-19
BEST RESIDENTIAL PROJECT
AFFORDABLE SEGMENT - NORTH ZONE
- GAUR CITY-2



PMAY EMPOWERING INDIA AWARDS 2019
THE MOST WELL PLANNED UPCOMING
PROJECT IN EWS CATEGORY
- GAUR SIDDHARTHAM



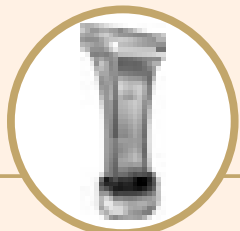
TIMES BUSINESS AWARDS 2019
BEST REAL ESTATE
DEVELOPER OF THE YEAR
- GAURSONS INDIA



CNBC AWAAZ REAL ESTATE AWARDS 2017-18
BEST RESIDENTIAL PROJECT
AFFORDABLE SEGMENT - NATIONAL
- GAUR CASCADES



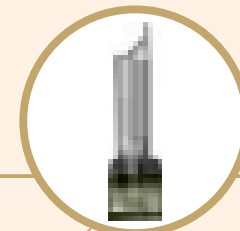
CNBC AWAAZ REAL ESTATE AWARDS 2017-18
BEST RESIDENTIAL PROJECT
AFFORDABLE SEGMENT - NORTH INDIA
- GAUR CASCADES



NDTV PROPERTY AWARDS 2016-17
BUDGET APARTMENT PROJECT
OF THE YEAR (2017) TIER 1 CITIES
- GAUR CASCADES



NDTV PROPERTY AWARDS 2016-17
BEST TOWNSHIP PROJECT
- GAUR CITY



CNBC AWAAZ REAL ESTATE AWARDS 2016-17
BEST TOWNSHIP PROJECT
- GAUR CITY

27+
YEARS OF UNFALTERING
COMMITMENT

65+
SUCCESSFULLY
DELIVERED PROJECTS

40000+
POSSESSIONS
GIVEN (2014-2021)

65000+
DELIVERED
UNITS

1 LAKH+
HAPPY
CUSTOMERS

6 MILLION+
SQUARE METER
(60 MILLION+ SQUARE FEET)
AREA DEVELOPED



GOLF VIEW LUXURY RESIDENCES

INTRODUCING
The Island

JAYPEE GREENS, GREATER NOIDA

WAKE UP TO THE
VIEW OF A MESMERIZING
18 HOLE GOLF COURSE...
EVERYDAY...

COME..EXPLORE..DISCOVER..

JAYPEE GREENS GREATER NOIDA IS A PREMIUM 182 HA (APPROX. 452 ACRES) GOLF-CENTRIC REAL ESTATE DEVELOPMENT WITH THE FINEST HOMES IN THE PLUS! LOCALES INTEGRATED WITH GOLF COURSES, LANDSCAPED EMERALD SPACES, RESORT LIVING AND UPCOMING VARIOUS DEVELOPMENTS.



INTRODUCING *The Island*

ALL ACTUAL IMAGES



JAYPEE GREENS

G A U R S
your green world

*The document is for information only. It is not for any contractual purpose. The document is not to be construed.

TOWNSHIP FEATURES/FACILITIES

JAYPEE GREENS



POWERBANK 亭



SILA KIPILAPIPIT BADMINTON COURT



WATER ROOM



PARKWAY GATE



SPORTS COMPLEX



TEMPLE

ALL ACTUAL IMAGES

BEAUTIFUL REALITY

When you leave the whole tree, the shapely branch, the tender & waxy leaf, the falling petal, the flight of birds and white clouds drifting on the wings of fire into the smoggy night, The playful shadow of his love... in the scenery, the people and the environment

Life is its fullest... never so busy.

Incorporating ideas of world renowned architects & design firms, Jaypee Green has evolved with many features that make it a truly world class real estate development. Salient features include:



The 18-hole Greg Norman championship golf course spread over 197 acres, is the longest in India at 7247 yards with 88 bunkers and 14 water bodies.

This White Canyon Collier designed chip and putt golf course, presents an enjoyable challenge to every level of golfer.



A 50-acre Nature Reserve Park full of flora and fauna envelops a beautiful 7.5 acre man-made lake in an oasis.



A Golf Academy, with a well equipped Pro Shop with world class training facilities.



A 120 room Golf and Spa resort in collaboration with Six Senses Resorts & Spa, tucked away in the ambient setting of the golf course.



Adams Golf Club - an international standard Integrated Sports Club with multiple sport disciplines, designed for amateurs & professional training as well as competitive format.



A well-designed Towel Centre with bar/lounge, boutique, cafe & restaurants.

JAYPEE GREENS



LOCATION MAP

MASTER PLAN, JAYPEE GREENS, GREATER NOIDA



MASTER PLAN

- PART CROW -

UNIT PLAN

UNIT NOS.-
A-201/202 - A - 3401/3402



- PART CROW -



TOTAL SALEABLE AREA= 553.94 sq.m / 5962.56 sq.ft. (approx)

TOWER - A, TYPICAL LVL FLOOR PLAN





UNIT PLAN

UNIT NOS.-
 B-201 - B-2401
 &
 I-201 - I - 2401



TOTAL SALEABLE AREA= 449.35 sq.m / 4835 sq.ft. (approx)

TOWER - B, TYPICAL LEVEL



UNIT PLAN

UNIT NOS.-
C-201/202 - C-2401/2402
&
H-201/202 - H-2401/2402



TOTAL SALEABLE AREA= 405 sq.m / 4077.00 sq.ft. (approx)

TOWER - C, TYPICAL LEVEL



- PART CHOWK -



UNIT PLAN

INTRODUCING *The Island*

- PART CHOWK -



TOTAL SALEABLE AREA= 342.17 sq.m / 3595 sq.ft. (approx)

TOWER - E, TYPICAL LEVEL



The Island