



**CASA GRANDE-2**  
**SMART HOMES**  
REJUVENATING TOMMOROW

## PRICE LIST

w.e.f 1<sup>st</sup> April 2026

Area of Flat	BSP	Type of Flat	Basic Cost
1155	8350	2 BHK	96,44,250
1325	8350	2 BHK+Servant	1,10,63,750
1775	8350	3 BHK	1,48,21,250
1965	8350	3 BHK+Servant	1,64,07,750

Special Offer		
Club Membership		FREE
Power Backup		FREE
Meter Load	HK)	FREE
EEC & FFC		FREE

Parking and PLC Charges	
Basement Parking	5,00,000
Park Facing	75PSF
Corner Facing	FREE
Internal Road Facing	FREE

Floor PLC	
Ground Floor	200PSF
1 <sup>st</sup> Floor to 3 <sup>rd</sup> Floor	175PSF
4 <sup>th</sup> Floor to 6 <sup>th</sup> Floor	150PSF
7 <sup>th</sup> Floor to 9 <sup>th</sup> Floor	125PSF
10 <sup>th</sup> Floor to 12 <sup>th</sup> Floor	100PSF
12A <sup>th</sup> Floor to 17 <sup>th</sup> Floor	75PSF
18 <sup>th</sup> Floor to 20 <sup>th</sup> Floor	50PSF
21 <sup>st</sup> Floor & Above	Nil

### Please Note:

- Lease Rent **75 & IFMS 50 per sq. ft.** additionally at the time of Possession.
- GST will be charged additionally on all payments as applicable.
- Extra Power Backup @**25,000 per KVA** will be charged additionally.
- Allied Charges, Floor PLC and Location PLC will be charged extra as applicable.
- Registration fee, Stamp Duty, Dual Meter installation charges and applicable taxes as per law will be additionally payable by applicant.
- Cheque will be in favour of **EARTHCON CONSTRUCTIONS PVT. LTD.**
- Above mentioned price are subject to change at sole discretion of the Company without any prior notice.
- UPRERA Registration No: UPRERAPRJ4491\* 01 Sq. Mt. = 10.764 Sq. Ft.



# CASA GRANDÈ-2 SMART HOMES

REJUVENATING TOMMOROW

## PAYMENT PLAN

### Construction Link Plan

<b>At the Time of Booking</b>	<b>10% of BSP</b>
<b>Within 30 Days of Booking</b>	<b>10% of BSP</b>
<b>On Casting of Raft</b>	<b>10% of BSP</b>
<b>On Casting of Third Floor Slab</b>	<b>10% of BSP</b>
<b>On Casting of Seventh Floor Slab</b>	<b>10% of BSP</b>
<b>On Casting of Eleventh Floor Slab</b>	<b>10% of BSP</b>
<b>On Casting of Final Floor Slab</b>	<b>10% of BSP</b>
<b>On Completion of Brickwork</b>	<b>10% of BSP</b>
<b>On Completion of Internal Plaster</b>	<b>10% of BSP</b>
<b>On Completion of Outer Plaster</b>	<b>05% +50% of all Allied Charges</b>
<b>On Offer of Possession</b>	<b>05% +50% of all Allied Charges</b>

  
**SMART EXECUTIVE  
SUITES**

  
**CASA GRANDÈ-2  
SMART HOMES**  
*REJUVENATING TOMORROW*



The taste of  
**LUXURIOUS  
LIVING** is now  
**SPREADING**  
its wings

MODERNIZED LIVING



SMART EXECUTIVE  
SUITES

STUDIO APARTMENT

  
SMART EXECUTIVE  
SUITES





- ❁ **Broadband Internet Connections**
- ❁ **24-Hour Security & Closed-Circuit Monitoring**
- ❁ **Shopping Complex**
- ❁ **Intercom Facility**
- ❁ **Home Automation**
- ❁ **Society access control via Mobile app.**



## Deluxe Suite

393 Sq. Ft.

### ACCESSORIES:

- ✿ Air Conditioner
- ✿ Modular Kitchenette
- ✿ Mini Refrigerator
- ✿ R.O. in the Kitchen
- ✿ Hot Plate (Induction)
- ✿ Microwave
- ✿ Toaster
- ✿ Electric Kettle
- ✿ 32" LED TV
- ✿ EPABX System
- ✿ Double Bed with Mattresses & Pillows
- ✿ Curtain with Rods
- ✿ Towel Rack in the Bathroom
- ✿ Geyser
- ✿ Hair Dryer



**CARPET AREA (AS PER RERA)**  
203 Sq. Ft.

ENTRY

**BALCONY AREA**  
35 Sq. Ft.

## King Suite

611 Sq. Ft.

### ACCESSORIES:

- ✿ 2 Air Conditioners
- ✿ Modular Kitchenette
- ✿ Refrigerator
- ✿ R.O. in the Kitchen
- ✿ Hot Plate (Induction)
- ✿ Microwave
- ✿ Toaster
- ✿ Electric Kettle
- ✿ 32" LED TV
- ✿ EPABX System
- ✿ Double Bed with Mattresses & Pillows
- ✿ Workstation with Chair
- ✿ 4 Seater Sofa with Corner Table
- ✿ Center Table
- ✿ 4 Seater Dining Table
- ✿ Console
- ✿ Curtain with Rods
- ✿ Towel Rack in the Bathroom
- ✿ Geyser
- ✿ Hair Dryer



**CARPET AREA (AS PER RERA)**

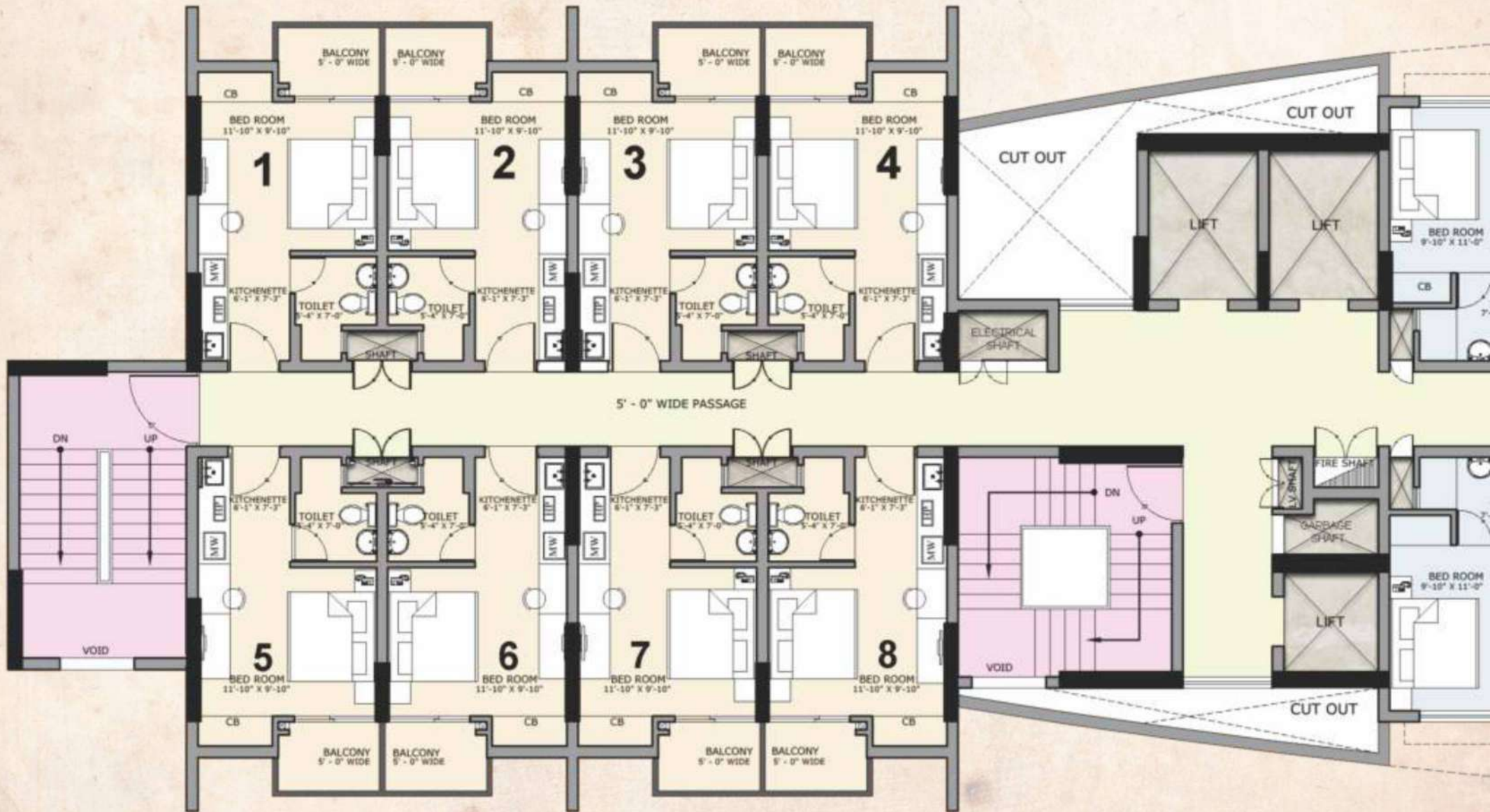
327 Sq. Ft.

**ENTRY**

**BALCONY AREA**

50 Sq. Ft.

# Cluster Plan





Deluxe Suite



King Suite



Note: All above layouts are tentative & are subject to change without any prior notice. These are purely conceptual and constitute no legal offering. Balconies are subject to change as per elevation drawings. 1 Sq.mtr. = 10.764 sq.ft.

## *Specifications*



### *Living Room/Dining Room*

- Floor** : **Vitrified Tiles**
- External Door & Window:** **UPVC Doors/Windows**
- Fixture & Fitting** : **Designer Lights, Fittings & Decorative Fan**
- Walls** : **POP finish with Plastic Emulsion/OBD**
- Internal Door** : **Flush Door Shutter**



### *Bedroom*

- Floor** : **Vitrified Tiles**
- External Door & Window:** **Powder Coated UPVC/Aluminum Frame Windows along UPVC/Aluminum Door**
- Fixture & Fitting** : **Designer Lights, Fittings & Decorative Fan**
- Wood Work** : **Wooden Cupboard**
- Home Automation** : **Main Door Lock Automation  
Automation of all rooms**

THE LARGEST LUXURY



CASA GRANDÈ-2  
SMART HOMES  
REJUVENATING TOMORROW

2 & 3 BHK PREMIUM APARTMENT



CASA GRANDÈ-2  
SMART HOMES  
REJUVENATING TOMORROW



A complete luxe lifestyle,  
with extravagant CLUBHOUSE.

- ❁ Fully Equipped Gymnasium
- ❁ Swimming Pool
- ❁ Spa Centre
- ❁ Yoga Centre
- ❁ Café Lounge
- ❁ Community Hall
- ❁ Squash Court
- ❁ Card Room
- ❁ Table Tennis
- ❁ Billiards
- ❁ Salon with Massage & Steam Rooms
- ❁ Exclusive Residents Club Lounge



**Tower B-1, B-2**

**2 BHK - 1155 Sq. Ft.**



**CARPET AREA (AS PER RERA)**  
 61.249 Sq. Mtr.  
 659.28 Sq. Ft.

**BALCONY AREA**  
 10.340 Sq. Mtr.  
 111.30 Sq. Ft.

Note: All above layouts are tentative & are subject to change without any prior notice. These are purely conceptual and constitute no legal offering. Balconies are subject to change as per elevation drawings. 1 Sq.mtr. = 10.764 sq.ft.

**Tower B-1, B-2**

**2 BHK+SERVANT - 1325 Sq. Ft.**



**CARPET AREA (AS PER RERA)**  
 70.220 Sq. Mtr.  
 755.85 Sq. Ft.

**BALCONY AREA**  
 11.772 Sq. Mtr.  
 126.71 Sq. Ft.

Note: All above layouts are tentative & are subject to change without any prior notice. These are purely conceptual and constitute no legal offering. Balconies are subject to change as per elevation drawings. 1 Sq.mtr. = 10.764 sq.ft.

**Tower A-1, A-2**

**3 BHK - 1775 Sq. Ft.**



**CARPET AREA (AS PER RERA)**  
 91.571 Sq. Mtr.  
 985.67 Sq. Ft.

**BALCONY AREA**  
 21.073 Sq. Mtr.  
 226.83 Sq. Ft.

Note: All above layouts are tentative & are subject to change without any prior notice. These are purely conceptual and constitute no legal offering. Balconies are subject to change as per elevation drawings. 1 Sq.mtr. = 10.764 sq.ft.

**Tower A-1, A-2**

**3 BHK+SERVANT - 1965 Sq. Ft.**



**CARPET AREA (AS PER RERA)**  
 104.064 Sq. Mtr.  
 1119.72 Sq. Ft.

**BALCONY AREA**  
 20.729 Sq. Mtr.  
 223.13 Sq. Ft.

Note: All above layouts are tentative & are subject to change without any prior notice. These are purely conceptual and constitute no legal offering. Balconies are subject to change as per elevation drawings. 1 Sq.mtr. = 10.764 sq.ft.

# Site Layout Plan



LEGEND'S	
1.	ENTRY/EXIT
2.	PARKING
3.	GUARD ROOM
4.	CLUB
5.	DROP OFF
6.	GREEN PATHWAY
7.	PAVEMENT
8.	WATER FEATURES
9.	JOGGING TRACK
10.	LAWN
11.	GREEN
12.	INFINITY POOL
13.	POOL DECK
14.	KID'S POOL
15.	JACUZZI
16.	KID'S PLAYING AREA
17.	WATER PLAY AREA
18.	SCULPTURE & WATER BODY
19.	SHOPPING COMPLEX

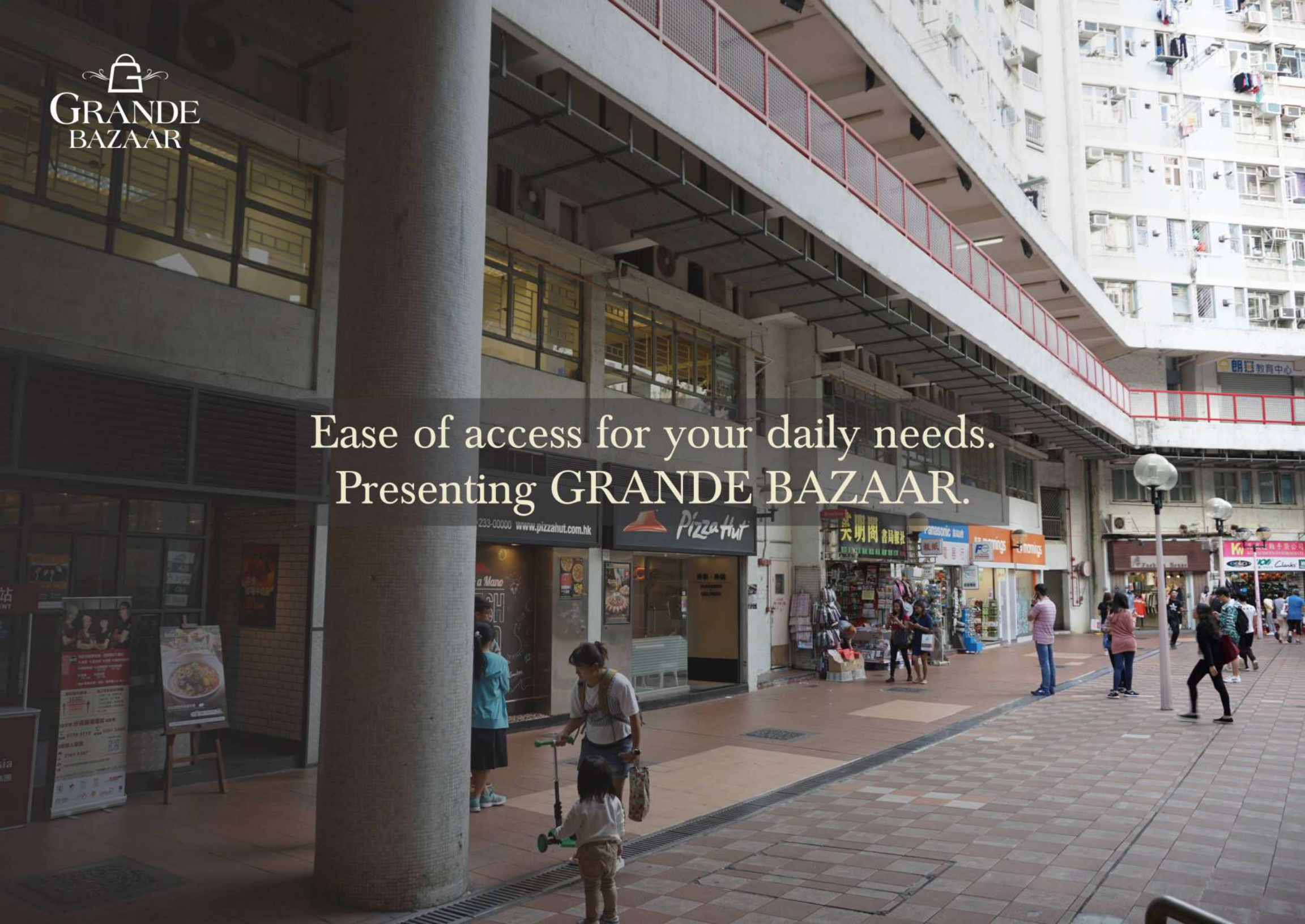
TYPE	UNIT AREA
DELUXE SUITE	393 SQ. FT.
KING SUITE	611 SQ. FT.
2BHK	1155 SQ. FT.
2BHK+SERVANT	1325 SQ. FT.
3BHK	1775 SQ. FT.
3BHK+SERVANT	1965 SQ. FT.

## **Specifications**

- Structure** : Earthquake resistant RCC frame structure as per seismic zone-4.
- Flooring** : Vitrified tiles in Master Bedroom and other Bedroom / Drawing / Dining all Stairs & Corridors with Granite / Kota stone flooring.
- Tiles** : Anti-skid tiles in bathroom and balconies.
- Exterior** : Permanent Finish / Texture paint.
- Kitchen** : Slabs are well finished. Granite stone with stainless steel sink and drain board. Dado on wall upto 2 ft. over counter.
- Bathroom** : Equipped with Cera / Parryware or Equivalent washbasins steel sink and drain board. Dado on wall Chrome plated tap fittings of marked Cera / Jaquar.
- Door** : All doors frame in Marandi wood with skin moulded flush doors and window frames and shutters in Aluminum / UPVC.
- Paint** : Oilbound distemper in entire flat.
- POP** : POP punning and cornices in entire flat.
- Electrical** : Electrical (Copper) wiring as per ISI code with modular switches. Circuits with MCB's (with safety assurance). TV & Telephone points in every room.
- Security** : Round-the-clock security system with Intercom Facility.
- Connectivity** : Society Access Control via Mobile App.
- Power Backup** : 2 KVA - 2 BHK / 3 KVA - 3 BHK.
- Home Automation** : Main Door Lock Automation & Automation of all Bedrooms.

  
GRANDE  
BAZAAR

Ease of access for your daily needs.  
Presenting GRANDE BAZAAR.



PEACE OF MIND



GRANDE  
BAZAAR

SOCIETY SHOPS

# GRANDE BAZAAR

Grande Bazaar is a vibrant and modern commercial complex situated in Casa Grande 2, in Greater Noida, Uttar Pradesh. Offering a diverse range of shops, it serves as a one-stop shopping destination for the residents of Casa Grande 2 and the surrounding areas. Grande Bazaar enjoys a prime location within the thriving community of Casa Grande 2. Its strategic positioning ensures easy access for both residents and visitors alike.

With 25 shops of different sizes, Grande Bazaar caters to the diverse needs and preferences of shoppers. The complex hosts a wide array of stores, including fashion boutiques, electronics outlets, grocery stores, beauty salons, cafes, and more. This extensive variety ensures that patrons can find everything they need conveniently under one roof. The complex is thoughtfully designed with ample lighting, spacious walkways, and comfortable seating areas, creating an inviting and pleasant shopping environment for customers.

Grande Bazaar is the heartbeat of commercial activity within Casa Grande 2, Greater Noida. Its diverse offerings, modern ambiance, and commitment to customer satisfaction make it the go-to shopping destination for residents and visitors alike. Whether one is looking for everyday essentials or indulging in retail therapy, Grande Bazaar promises a delightful and fulfilling experience.



# Cluster Plan



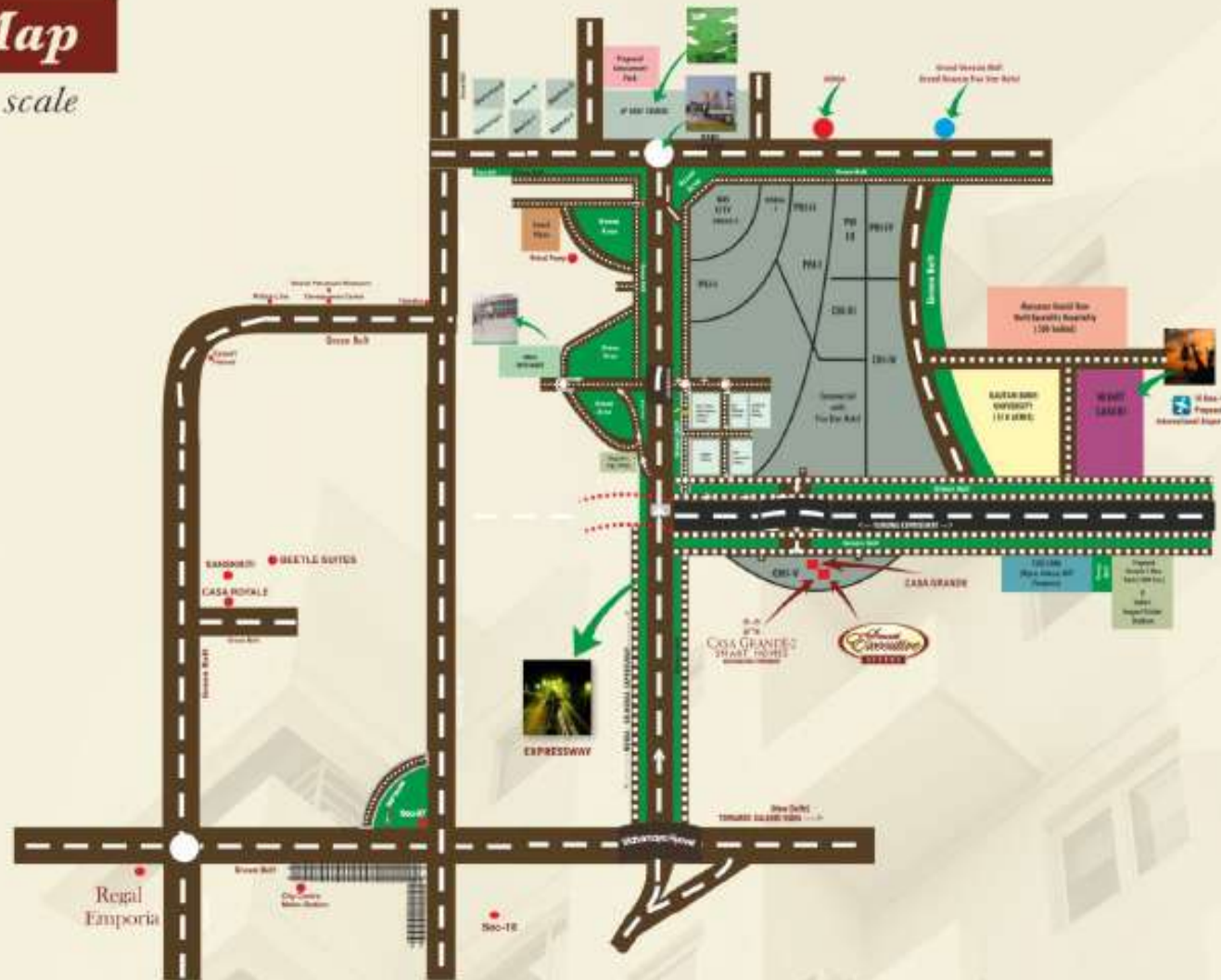
UNIT NO.	SALABLE AREA SQ. FT.
Shop-1	789
Shop-2	778
Shop-3	778
Shop-4	801
Shop-5	611
Shop-6	700
Shop-7	700
Shop-8	590
Shop-9	590
Shop-10	700
Shop-11	700
Shop-12	611
Shop-12A	388

**G  
R  
O  
U  
N  
D  
  
F  
L  
O  
O  
R**

UNIT NO.	SALABLE AREA SQ. FT.
Shop-14	297
Shop-15	340
Shop-16	340
Shop-17	287
Shop-18	287
Shop-19	340
Shop-20	340
Shop-21	297
Shop-22	392
Shop-23	380
Shop-24	380
Shop-25	392

# Location Map

not to scale



**EARTHCON**  
concerned living

**ATS**  
The better way home.

Corp. Office: B-01, Sector-04, Noida, Uttar Pradesh - 201301  
Site Office: Plot No. GH-06C, Sector-CHI-5, Greater Noida, Uttar Pradesh

Disclaimer: Artistic impressions and photographs shown are imaginary. \*The Brochure is purely Conceptual and not a legal offering. Altering all right reserved.