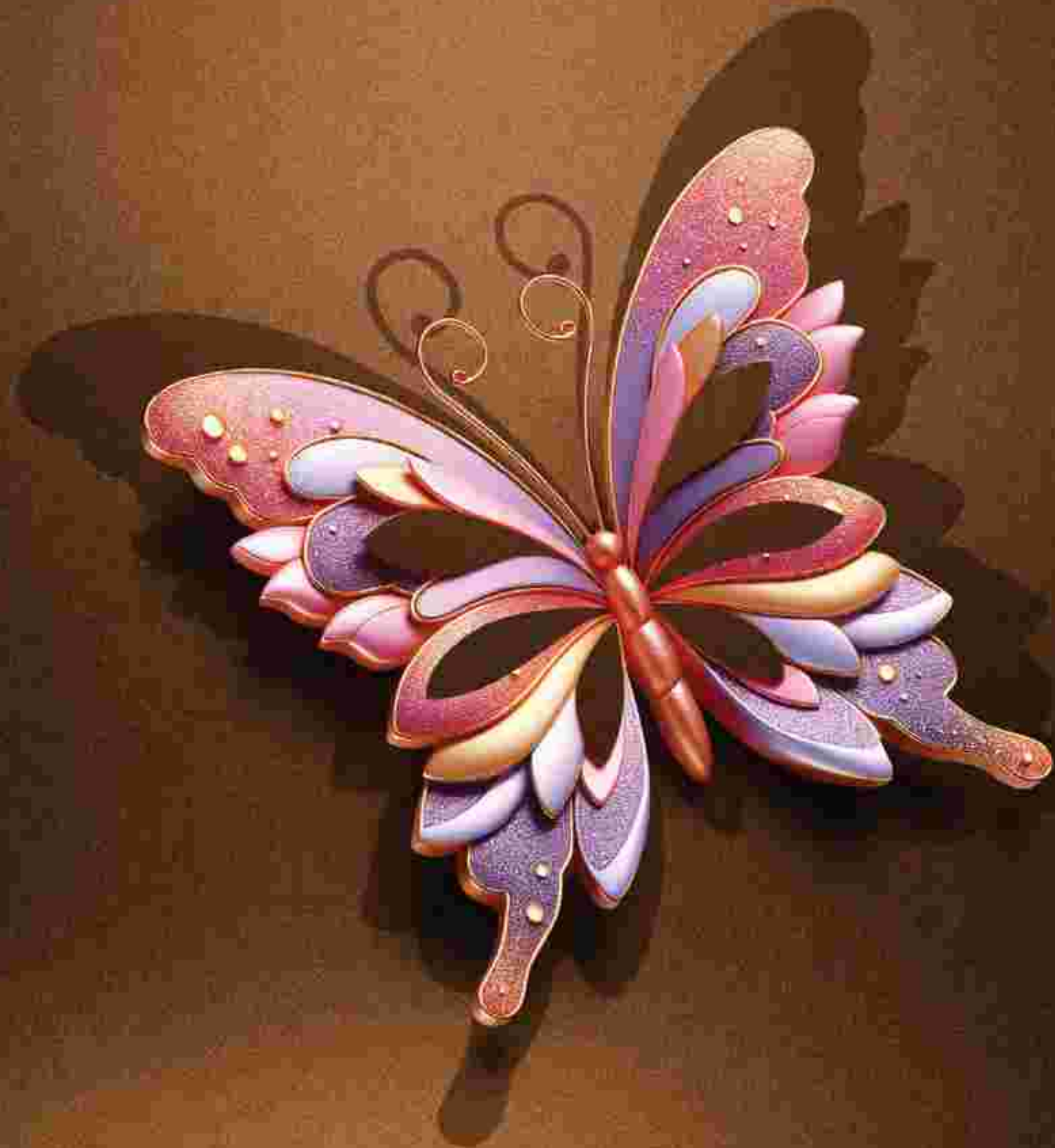


Becoming
an epitome
of excellence





EVERY GREAT
BEAUTY IS BORN
FROM CHANGE -
IT'S THE
JOURNEY THAT
SHAPES
PERFECTION.

THE BUTTERFLY

NATURE'S OWN EMBLEM OF GRACE
BEGINS ITS JOURNEY IN A HUMBLE
COCOON. QUIETLY, IT NURTURES ITSELF,
AWAITING ITS MOMENT TO EMERGE IN
COLOURS, BEAUTY, AND FREEDOM.

BE READY FOR A CREATION WHERE
LIFE TRANSFORMS INTO SOMETHING
TIMELESS, BEAUTIFUL, AND
EXTRAORDINARY!

1

CATERPILLAR

A humble
beginning, full of
quiet potential.



2

COCOON

A pause of patience,
where promise is
nurtured.



4

BLOOM

Life in harmony
with nature,
completing the
circle of beauty.

3

BUTTERFLY

Emerging in
colours, grace,
and freedom.



WITNESS THE BEAUTY
OF BECOMING



@

**THE YAMUNA
EXPRESSWAY**



THE YAMUNA EXPRESSWAY- FROM BARREN STRETCHES TO A VISION IN MOTION

Once the Yamuna Expressway corridor was a little more than endless stretches of farmland and untouched land. Its potential was hidden, waiting for a spark of vision.

- ▶ The six-lane expressway itself was the first milestone - a bold stroke of infrastructure connecting Delhi to Agra and putting this region on the map.
- ▶ It laid the foundation for what was to come.
- ▶ Slowly, opportunities began to whisper - with plans for industrial hubs, sports infrastructure, and the first glimpses of an urban tomorrow.



Disclaimer: All images, layouts, specifications, drawings, and other written documents contained in this brochure are for illustrative and representational purposes only and do not constitute any legal offering, representation, or warranty of any nature. Reference to this brochure is for illustrative purposes only and does not constitute an offer of any financial product. All growth potential of the area or development zone are based on the prevailing information available in public domain and shall not, in any manner, be construed as assurance, commitment, or guarantee of such development or growth thereof. Prospective purchasers are advised to verify all details, including project approvals, sanctioned plans, specifications, and the current status of surrounding development, independently before making any investment.



YAMUNA EXPRESSWAY TODAY- AN EMERGING GROWTH CORRIDOR

The Yamuna Expressway has already transformed into a rising destination.

- ▶ It links Delhi, Noida, Greater Noida, and Agra seamlessly, with the Eastern Peripheral Expressway further boosting accessibility.
- ▶ Sports infrastructure, universities, and industrial parks already give the region a new identity.
- ▶ Emerging industrial and logistics hubs.
- ▶ Existing sports and lifestyle landmarks (F1 track, universities, townships).

Source:
www.yamunaexpresswayauthority.com

THE CATALYST OF CHANGE- NOIDA INTERNATIONAL AIRPORT ARRIVES @ THE YAMUNA EXPRESSWAY

The story of the future begins with India's largest upcoming airport - Noida International Airport (Jewar). Spread over 1,300+ hectares and developed by Zurich Airport International AG, the airport will be a true game-changer.

- ▶ Upcoming Noida International Airport (NIA) would be India's largest and world's 4th largest Airport
- ▶ Managed & Operated by Yamuna International Airport Private Limited (YIAPL) a subsidiary of Zurich Airport International AG Envisioned to be 6-Runway Airport, expanding into 2900 hectares
- ▶ Developed through a Public-Private Partnership Model (PPP) A Green Field Airport
- ▶ India's first 100% FDI airport project. Direct boost to residential, commercial, and industrial demands. Phase 1 will be operational by 2025, handling millions of passengers annually, while multiple phases will add more terminals and runways over time.
- ▶ This Landmark will redefine connectivity, business travel, tourism, and real estate dynamics across the entire corridor.



Image used for reference purposes only.

Disclaimer: All images, layouts, specifications, approvals, and other written documents contained in this brochure are for illustrative and representational purposes only and do not constitute any legal offering, representation, or warranty of any nature. References in this brochure to future infrastructure, commercial, residential or commercial developments, or growth potential of the area or development zone, are based on the prevailing information available in public domain and shall not, in any manner, be construed as assurance, commitment, or guarantee of such developments or benefits thereof. Prospective purchasers are advised to verify all details, including project approvals, sanctioned plans, specifications, and the current status of surrounding development, independently before making any investment.



A WAVE OF MEGA DEVELOPMENTS -TRANSFORMING YAMUNA EXPRESSWAY INTO AN ECONOMIC POWERHOUSE

- ▶ From Logistics hubs to Electric Mobility Zones from Residential Townships to IT & Fin Tech cities, the region is developing into a thriving ecosystem.
- ▶ Multiple Industrial Zones planned such as Toy Park, MRO, Film City, Leather Manufacturing Park, Heritage City, Furniture Hub, Handloom Cluster, Medical Device Park, Metro Coach Factory and many more.
- ▶ Attracting immense global & national investments from Corporate Giants.

YAMUNA EXPRESSWAY- THE VISION OF 2030

By 2030, Yamuna Expressway will stand as one of India's most futuristic cityscapes.

Being next to the Noida International Airport the area will see a high growth owing to excellent infrastructure & connectivity.

Ancillary Businesses (Cargo, Warehouse, Logistics, Hospitality, Trade) often grow exponentially in such areas because of shorter commute time and better utilities.

Areas near the Airport see strong appreciation once the Airport becomes functional.

Source:
www.ecnnews.com
www.wikipedia.org



Image used for reference purpose only.

Disclaimer: All images, layouts, specifications, drawings, and other artistic depictions contained in this brochure are for illustrative and representational purposes only and do not constitute any legal offering, representation, or warranty of any nature. References to this brochure as future infrastructure, connectivity, educational or commercial development, or growth potential of the area or development zone are based on the prevailing information available in public domain and shall not, in any manner, be construed as assurance, commitment, or guarantee of any development or facilities thereof. Prospective purchasers are advised to verify all details, including project approvals, sanctioned plans, specifications, and the current status of surrounding development, independently before making any investment.

LONG BEFORE THE BUZZ, WE ENVISIONED THE REGION'S POTENTIAL WITH THE ICONIC

With our world-class township, we set the tone for large-scale, self-sustained living - bringing premium homes, world-class amenities, and lifestyle experiences to the region. Today, we continue this journey, creating benchmarks that define the region's skyline.



Spread over a massive 101 hectares (250 acres).

Seamless confluence of Residential, Commercial and Retail.

Plots, Apartments, Retail Shops, Studio Apartments, Themed Villas, Sports and a lot more.

Home to 108 feet world's tallest Lord Shri Krishna statue



Actual images of Gaur Yamuna City

A CBSE affiliated school with world class curriculum in an integrated township



Actual images of Gaur Yamuna City





GET READY FOR
THE NEXT CHAPTER



DESIGNED FOR
THOSE WHO
DEMAND SERENITY,
EXCLUSIVITY, AND
THE RAREST FORM
OF BEAUTY.



INTRODUCING



GAUR
CHRYSALIS

— *The Beauty of Becoming* —

(PHASE - II)

3 & 4 BHK
Landmark Residences

100

A row of tall, modern skyscrapers with illuminated spires at sunset. The buildings are arranged in a line, and the sun is setting behind them, creating a warm, golden glow. The sky is a mix of orange, yellow, and blue. The buildings have a distinctive architectural style with vertical lines and illuminated spires. The foreground shows a road with some cars and trees.

Becoming
the talk of the town!

THE BEAUTY OF BECOMING YOUR BEST VERSION



THE LOGO

A powerful emblem of transformation and timeless growth. It captures the essence of a journey where strength and elegance come together to shape progress.



Butterfly Motif

Symbolizing transformation, beauty, and new beginnings, the butterfly reflects the very spirit of change. The logo also denotes an upward path—a deeper level of meaning—acknowledging the beauty of nature, sustainability, and harmony.



Architectural Pillar

At its core, the form of a pillar, sometimes arranged as the butterfly's body, conveys strength, stability, and stability—symbolizing foundations upon which growth and transformation can thrive.



Together

The butterfly and pillar create a perfect balance—where delicate beauty is supported by unwavering strength.

The Tagline: "The Beauty of Becoming"

A symbol of the most powerful force— not just being, but becoming. "Beauty" evokes elegance, aesthetics, and the grace of transformation. "Becoming" implies growth, evolution, and the unfolding of potential into reality.

Much like a chrysalis turning into a butterfly, **Our Chrysalis** is about embracing the art of transformation and the elegance of evolution.




GAUR
CHRYSALIS
The Beauty of Becoming

**A DESTINATION
BRIMMING
WITH POSSIBILITIES**

Map not to scale

AT THE HEART OF GROWTH, AT THE CENTER OF CONVENIENCE

Gaur Chrysalis is situated on the Yamuna Expressway, the fastest growing corridor of India.

Located adjacent to upcoming Noida International Airport, Business Hubs, Entertainment Zones and so much more, it literally brings world at your doorstep.



THE BEAUTY OF BECOMING
ONE OF THE FINEST
PROJECTS ON THE
YAMUNA EXPRESSWAY



FUTURE DEVELOPMENT

WELCOME TO A
WORLD OF
**ELEGANCE AND
UNMATCHED LUXURY**

Gaur Chrysalis draws inspiration from the art of perfect transformation, crafting a world where every aspect would be extraordinary and memorable.

*Project spread across approx.
4.77 hectares (11.8 acres)*

7 Towers (Phase 1)

*Beautiful Central Landscaped Greens
in 3.23 hectares (8 acres) inspired by
Beauty of a Butterfly*

Grand Entrance - Triple height lobby

*Club & Project Interiors on the
Art Deco theme*

*The biggest Clubhouse on the Yamuna
Expressway 6867 Sq. Mt.
(75,000 Sq. Ft.) spread over multiple
levels with 75+ amenities.*



From dusk to dawn,
a lifestyle that celebrates
The beauty of
Becoming



FUTURE DEVELOPMENT



**MASTER - PLANNED
TO HARMONIZE
GRANDEUR WITH
CONVENIENCE**



Spread across breathtaking 4.77 hectares (11.6 acres), the master layout is designed for harmony. Wide Internal Roads, Beautiful Central Landscaped Greens and a Grand Clubhouse ensure ease of movement and indulgence at every step. Wide boulevards, lush green belts, and walkable avenues ensure effortless living in a community designed for generations.



MASTER PLAN



GAUR CHRYSALIS

The Beauty of Becoming

(PHASE - II)

LEGENDS

- | | |
|--|--|
| 1. Resting Pavilion | 21. Alfresco Dining (Under Club Podium Amenity) |
| 2. Flume Garden | 22. Rains Promenade |
| 3. Butterfly Garden | 23. Viewing Pools |
| 4. Viewing Trellis | 24. Festivity Lawn |
| 5. Art Plaza | 25. Spill Out Dining Space |
| 6. Overlooking Deck | 26. Wellness Garden |
| 7. Community Meet Up Plaza | 27. Fruit Orchard |
| 8. Senior Citizen Zone | 28. Ramp Access |
| 9. Pooja Flower Garden | 29. Step Access |
| 10. Courtyard Garden | 30. Pool Deck |
| 11. Special Paved Plaza | 31. Sunken Lounge |
| 12. Play Mounds | 32. Barbecue Pavilion |
| 13. Focal Sculpture | 33. 50m Long Lap Pool |
| 14. Chit-chat Nook | 34. Jacuzzi / Aqua Gym / Bubble Jets |
| 15. Reflexology Path | 35. Lounge Deck |
| 16. Kids Play Area | 36. Central Trellis |
| 17. Amphitheater | 37. Kids Pool |
| 18. Ten Net | 38. Pool Pavilion |
| 19. Fitness Corner (Under Club Podium Amenity) | 39. Day Beds |
| 20. Pickleball Courts | 40. Outdoor Shower |
| 21. Fairy Light Garden | 41. Meditation Pond |
| 22. Cricket Pitch | 42. Zen Garden |
| 23. Multi-Purpose Court | 43. Viewing Edge Garden |
| 24. Floric Lawn | 44. Fire Driveway Ramp |
| 25. Pools Activity Area | 45. Senior Corner |
| 26. Board Game Plaza (Under Club Podium Amenity) | 46. Yoga Lawn |
| 27. Skating Rink (Under Club Podium Amenity) | 47. Floral Pavilion |
| 28. Open Plaza (Under Club Podium Amenity) | 48. Succulent Garden (Under Club Podium Amenity) |
| 29. Cascading Planter | 49. Meandering Walkway |
| 30. Tunnel Access (below pool) | 50. Jogging / Walkway |
| | 51. Open Plaza |
| | 52. Prayer Hall |
| | 53. Pool Bar/Juice Bar |
| | 54. Pet Park |



45 M WIDE ROAD



VISION OF THE PROJECT ARCHITECT

The architecture of the project draws inspiration from timeless imperial styles.

Every arch, pillar, and facade tells a story of heritage.

Inside, expansive layouts and regal interiors create a life worthy of royalty.



GROWING IN ELEGANCE THROUGH THE CONTRIBUTION OF INTERNATIONALLY FAMED DEVELOPERS

Project Architecture -
Imperial grandeur, featuring
contemporary facades with modern
design elements.

Project Architect -
Hafeez Contractor

Club & Interior Architect -
OchreInk

Landscape Architect -
Site Concepts International

Structure -
R D Consultant

MEP -
Paradise Consultant



GLOBALLY RECOGNIZED ICON OF INDIAN ARCHITECTURE THE ENDURING LEGACY OF HAFEEZ CONTRACTOR

- India's most renowned architect and a Padma Bhushan awardee.
- Revolutionized urban living with designs that balance innovation, functionality, and grandeur.
- Work ranging from futuristic campuses to soaring high-rises.

SIGNATURE WORKS:

- D Y Patil Sports Stadium, Navi Mumbai
- Lavasa City, Pune
- Turbhe Railway Station, Navi Mumbai

SCAN FOR



ARCHITECT'S MESSAGE

Hafeez Contractor
Project Architect



TRANSFORMING MODERN LANDSCAPES

Under the visionary leadership of Clint Owen, Design Director - Site Concepts International (SCI) has established a reputation for high quality professional planning and design throughout Asia with active projects in over eight countries.

SCAN FOR



ARCHITECT'S MESSAGE

LANDSCAPE ARCHITECT



Clint Owen
Design Director



THE ART OF OPULENCE - MEET THE MAESTRO OF LUXURY LIVING

The name 'OchreInk' derives inspiration from the color ochre itself, emphasizing an awareness of sustainability and following the principle of always being connected to one's roots. With over 17 years of professional experience in varied segments, Sachin Chavan has a knack for innovations and ideas in synchronicity with the client's needs.

SCAN FOR



ARCHITECT'S MESSAGE

INTERIOR ARCHITECT



Sachin Chavan
Principal Designer





THE BEAUTY
OF BECOMING



THE
EMBODIMENT
OF PERFECT
PLANNING



Where your
Dream
lifestyle takes shape



THE BEAUTY OF BECOMING AN EPITOME OF ART IN LANDSCAPING

The landscaping at Gaur Chrysalis takes inspiration from the transformation of a butterfly.

It has Beautiful Central Landscaped Greens spread over an expansive area which would include lawns, tranquil water bodies, shaded boulevards and leisure zones.





A transformation
towards fine
Luxury
living

Total open area including Landscaped Greens in 3.23 hectares (8 acres) inspired by the beauty of a Butterfly

THE BEAUTY OF BECOMING CRAFTED BY NATURE. ELEVATED BY DESIGN.



AQUA ZONE

Outdoor Swimming Pool (Olympic Size)

Jacuzzi

Aqua Gym

Bubble Jets

Kids Pool

Pool Deck

Pool Bar / Juice Bar



GARDENS & GREEN SPACES ZONES

Butterfly Garden

Fern Garden

Pooja Flower Garden

Fruit Orchard

Plumeria Garden

Succulent Garden

Wellness Garden

Zen Garden

Floral Pavilion

Meandering Walkway

Palm Promenade

Viewing Edge Garden

Fairy Light Garden



RELAXATION & MEDITATION ZONES

Meditation Corner

Meditation Pods

Resting Pavilion

Sunken Lounge

Day Beds

Lounge Deck

Viewing Pods

Yoga Lawn

Reflexology Path

Resting Area (Seating)



ACTIVE RECREATION & SPORTS ZONES

Multi-Purpose Court

Cricket Pitch

Pickleball Court

Fitness Corner

Jogging / Walkway

Skating Rink



SOCIAL & COMMUNITY ZONES

Community Meet Up Plaza

Senior Citizen Zone

Alfresco Dining

Barbecue Pavilion

Chit-chat Nook

Coworking Stations

Visitor Lounge

Amphitheater

Board Game Plaza

Board Games

Pet Park

Picnic Lawn



CHILDREN'S PLAY ZONES

Kids Play Area

Tot Lot

Play Mounds



QUIET ZONES

Reading Area

Mini Library





Outdoor Swimming Pool
(Olympic Size)



Jogging Track



Cricket Pitch




**ONE CLUB.
INFINITE WORLDS.**

A fusion of Sports. Wellness. Fun. Zen.
Entertainment and beyond.



**CLUB
ORION**



THE BIGGEST CLUBHOUSE OF THE REGION

6867 Sq.Mt. (75000 Sq.Ft.)*
Modern Clubhouse spread over 5 levels.

A Triple height lobby adorned with
statement art.

WHERE EVERY DAY FEELS LIKE A CELEBRATION

From a luxury spa and grand lounges to indoor sports arenas and fine dining spaces, the clubhouse redefines indulgence. Whether it's a quiet retreat or a grand gathering, this landmark project makes every moment extraordinary. Every detail is designed to offer unmatched indulgence - making everyday living a celebration.

Social & recreational heart of the community

A perfect blend of leisure and wellness

Grand lounges & party halls

State-of-the-art gymnasium/
fitness studio

Sports & games zones

Luxury spa & wellness retreats

Multi-cuisine fine dining spaces

Banquet & event spaces

Outdoor pools



TRANSFORMATION OF A REGULAR DAY INTO A MODEL LIFESTYLE



REJUVENATION BAY (THE CALM CORNER)

Heated Indoor Pool
(Half Olympic Size)
Wellness Lounge (Spa)
Ice/Cold Bath



THE SPORTS PAVILION

Badminton Court
Squash Court
Smash Cricket Area
Play Courts



THE FUN FRONTIER

Karaoke Room
Music/Jam Room
Billiards Room
Virtual Game
Simulators
Theater Lounge



GAMING ZONE

Arcade Junction
Bowling Alley
Foosball Table
Basketball Table
Air Hockey



THE GRAND AFFAIR

Restaurant
Banquet Hall
Party Hall
Guest Rooms
Co-working Stations
Crèche



THE VITALITY HUB

State-of-the-art Gym
Yoga Studio
Zumba Room
Aerobics



THE ARTISTRY ATRIUM

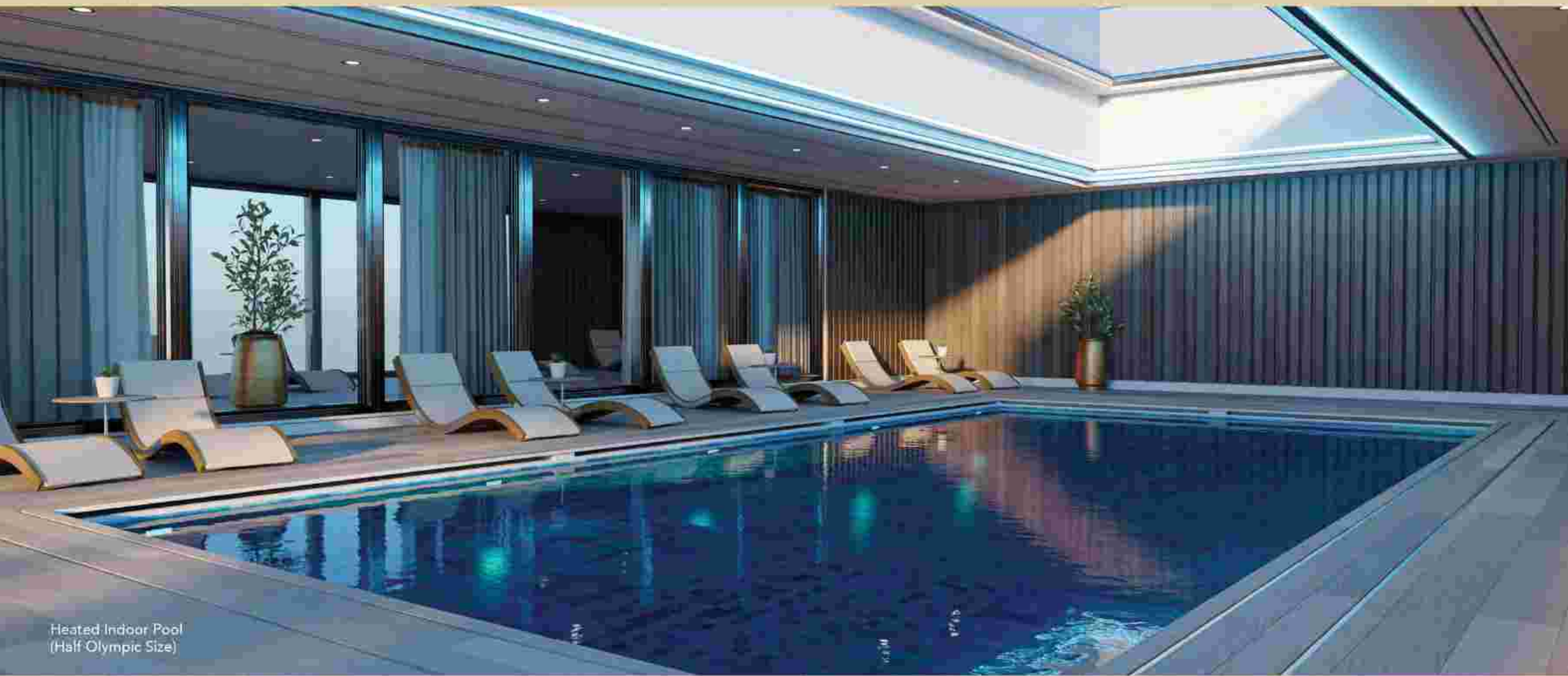
Art Gallery



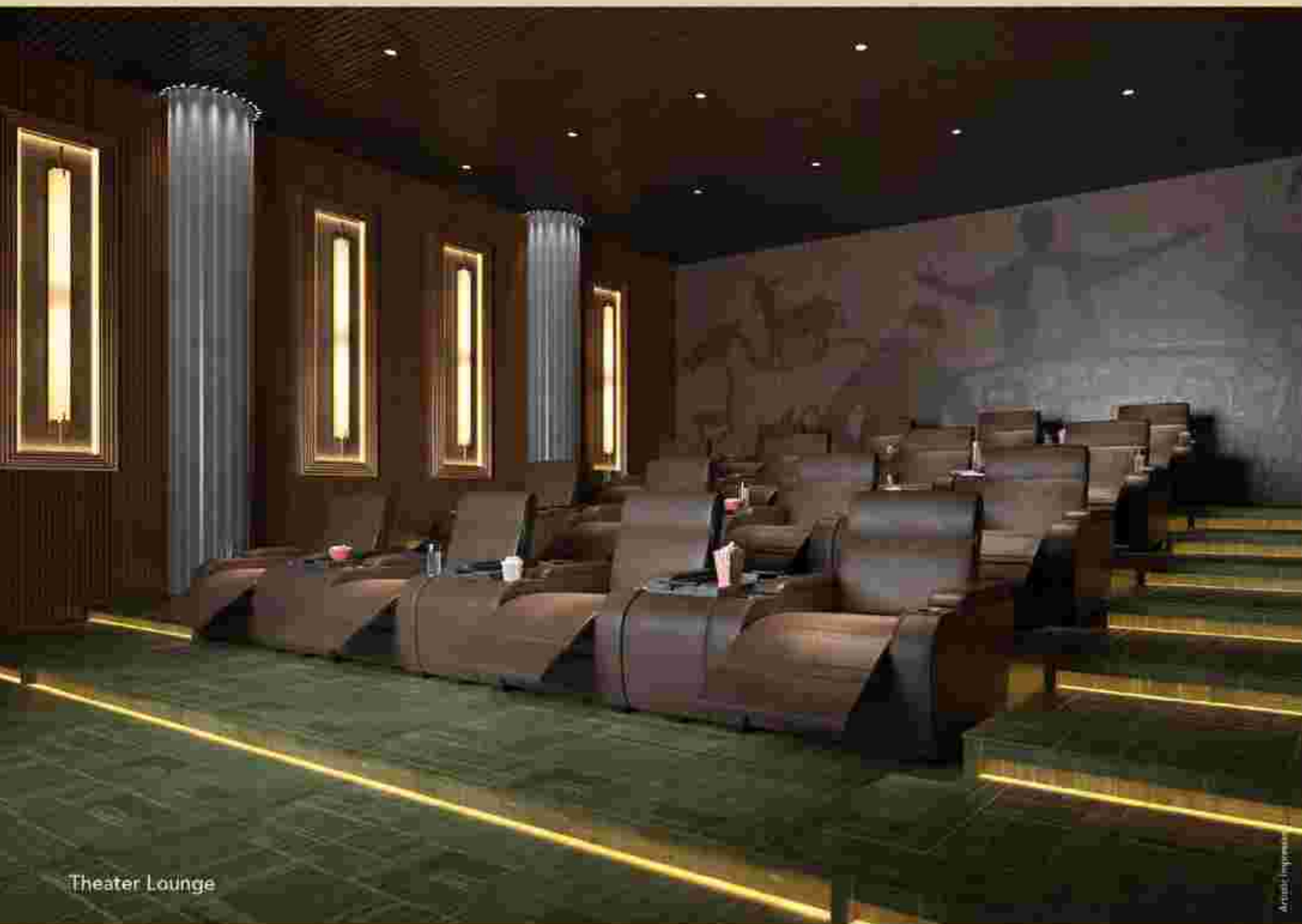
CLUB TERRACE

Activity Lawn
Outdoor Café
Seating Garden
Outdoor Seating
Viewing Pavilion
Herb Garden
Sky Lounge
Sky Bar





Heated Indoor Pool
(Half Olympic Size)



Theater Lounge

Armani Impression



Arts Room



Music Room



WHERE EVERY DETAIL
EMBODIES DISTINCTION



Welcome to a home where
elegance is not displayed, but
lived. Every corner tells a story
of refinement, and every detail
reflects an artful pursuit of
perfection. More than a
residence, it is an heirloom of
rare luxury - created for those
who seek distinction.
The interiors unite timeless
grace with modern
sophistication, shaping
sanctuaries that celebrate
life at its finest.





The beauty of becoming begins the moment you walk in

GRAND ENTRANCE



Where moments become beautiful memories

LIVING ROOM



A legacy of distinction

DINING AREA



Inviting an ultra-luxurious lifestyle

MASTER BEDROOM



DESIGN MEETS
EXPRESSION



ARCHITECTURAL
BLUEPRINTS OF
FINESSE





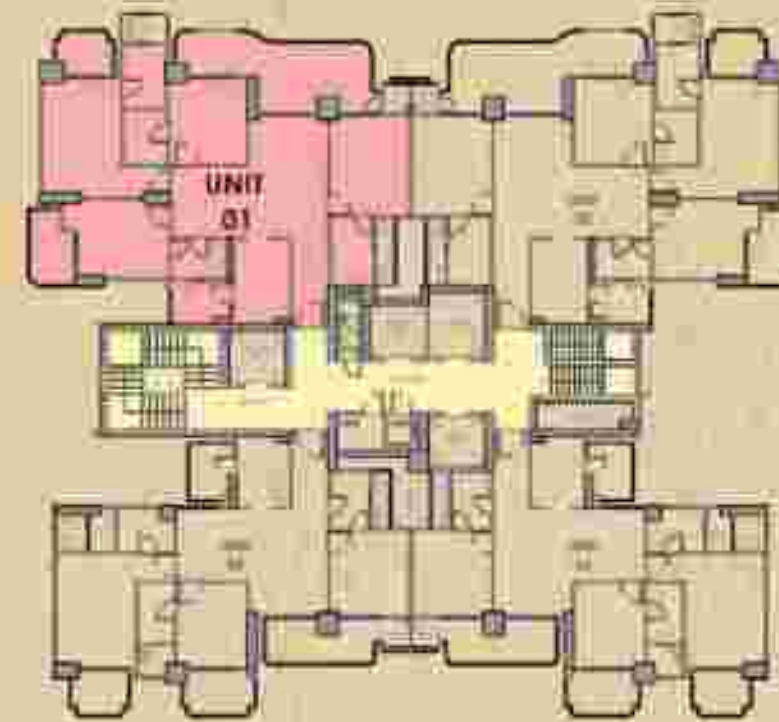
UNIT PLAN 1 - 4 BHK

1 BASEMENT+
STILT-1/PODIUM/GROUND +
STILT-2/ UPPER GROUND +
34 STOREY

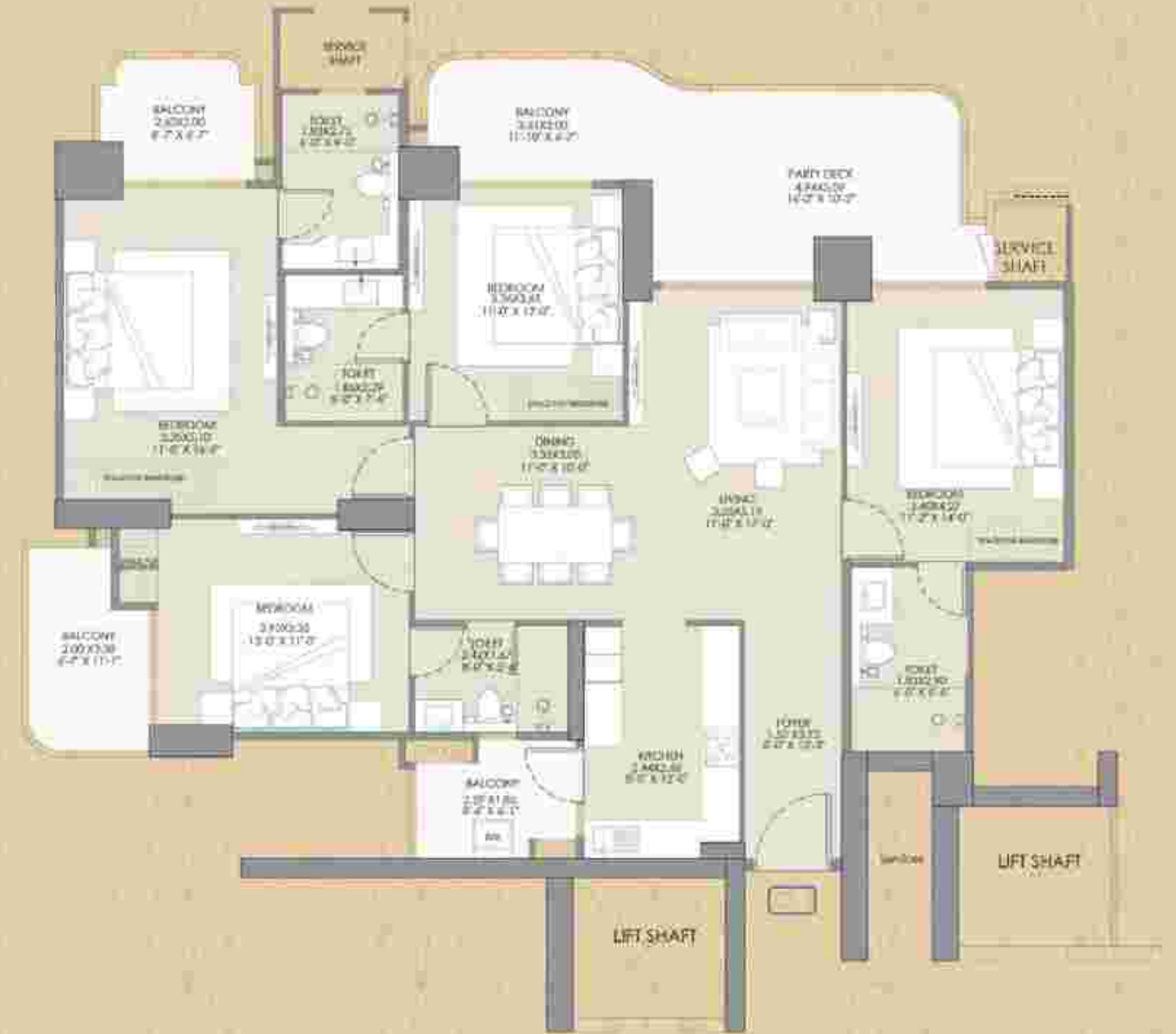
4 BEDROOMS + LIVING ROOM
+ DINING + FOYER+ KITCHEN
WITH UTILITY BALCONY +
4 TOILETS + 1 BIG BALCONY +
2 BALCONIES

AREA DETAILS

BUILT-UP AREA	=	178.55 SQ. MT / 1922 SQ. FT
		(Covered Area + Balcony Area)
CARPET AREA	=	124.54 SQ.MT / 1340 SQ.FT
COVERED AREA	=	141.73 SQ.MT / 1526 SQ.FT
BALCONY AREA	=	36.82 SQ.MT / 396 SQ.FT
COMMON AREA	=	53.24 SQ.MT / 573 SQ.FT
TOTAL AREA	=	231.79 SQ.MT / 2495 SQ.FT



KEY PLAN





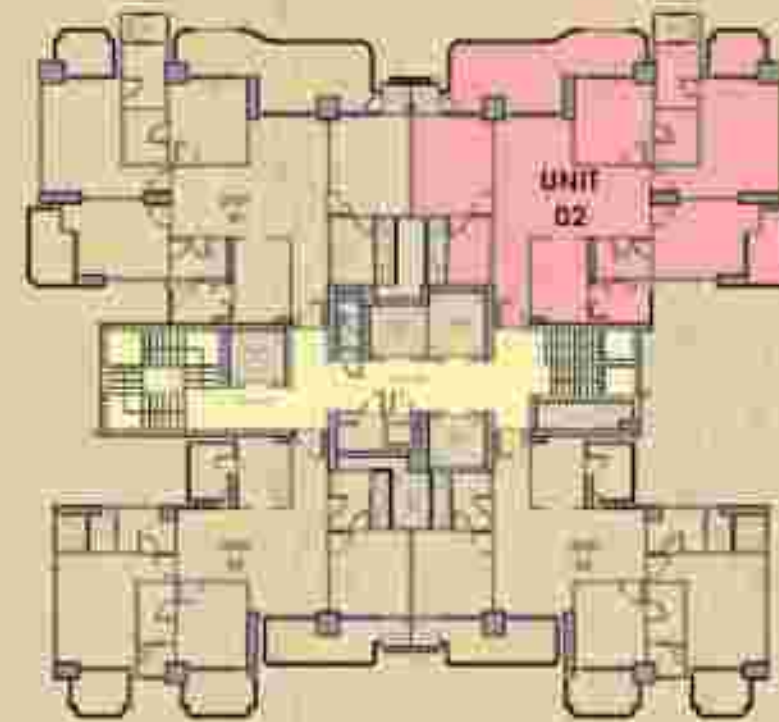
UNIT PLAN 2 - 4 BHK

1 BASEMENT+
STILT-1/PODIUM/GROUND +
STILT-2/ UPPER GROUND +
34 STOREY

4 BEDROOMS + LIVING ROOM
+ DINING + FOYER+ KITCHEN
WITH UTILITY BALCONY +
4 TOILETS + 1 BIG BALCONY +
2 BALCONIES

AREA DETAILS

BUILT-UP AREA	=	178.55 SQ. MT / 1922 SQ. FT
		(Covered Area + Balcony Area)
CARPET AREA	=	124.54 SQ.MT / 1340 SQ.FT
COVERED AREA	=	141.73 SQ.MT / 1526 SQ.FT
BALCONY AREA	=	36.82 SQ.MT / 396 SQ.FT
COMMON AREA	=	53.24 SQ.MT / 573 SQ.FT
TOTAL AREA	=	231.79 SQ.MT / 2495 SQ.FT



KEY PLAN





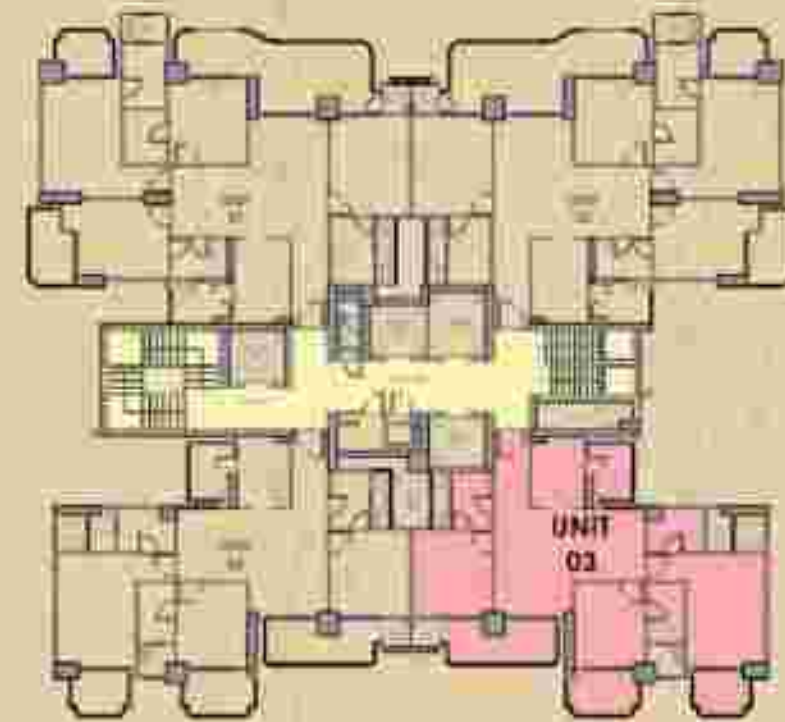
UNIT PLAN 3 - 3 BHK

1 BASEMENT+
STILT-1/PODIUM/GROUND +
STILT-2/ UPPER GROUND +
34 STOREY

3 BEDROOMS + LIVING ROOM
+ DINING + FOYER + KITCHEN
WITH UTILITY BALCONY +
3 TOILETS + 3 BALCONIES

AREA DETAILS

BUILT-UP AREA	=	137.07 SQ. MT / 1475 SQ. FT
		(Covered Area + Balcony Area)
CARPET AREA	=	92.83 SQ.MT / 999 SQ.FT
COVERED AREA	=	112.12 SQ.MT / 1207 SQ.FT
BALCONY AREA	=	24.95 SQ.MT / 268 SQ.FT
COMMON AREA	=	40.37 SQ.MT / 435 SQ.FT
TOTAL AREA	=	177.44 SQ.MT / 1910 SQ.FT



KEY PLAN





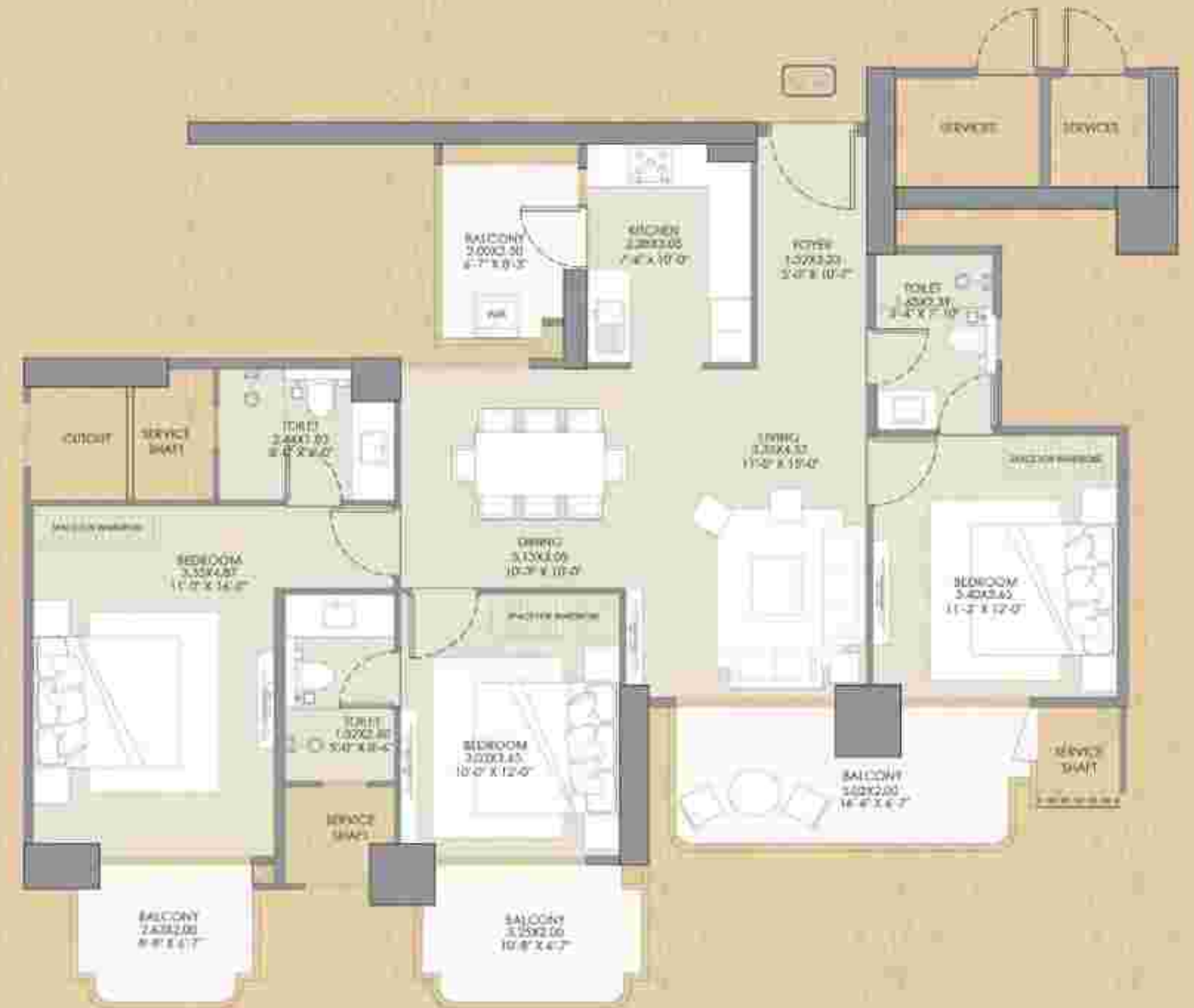
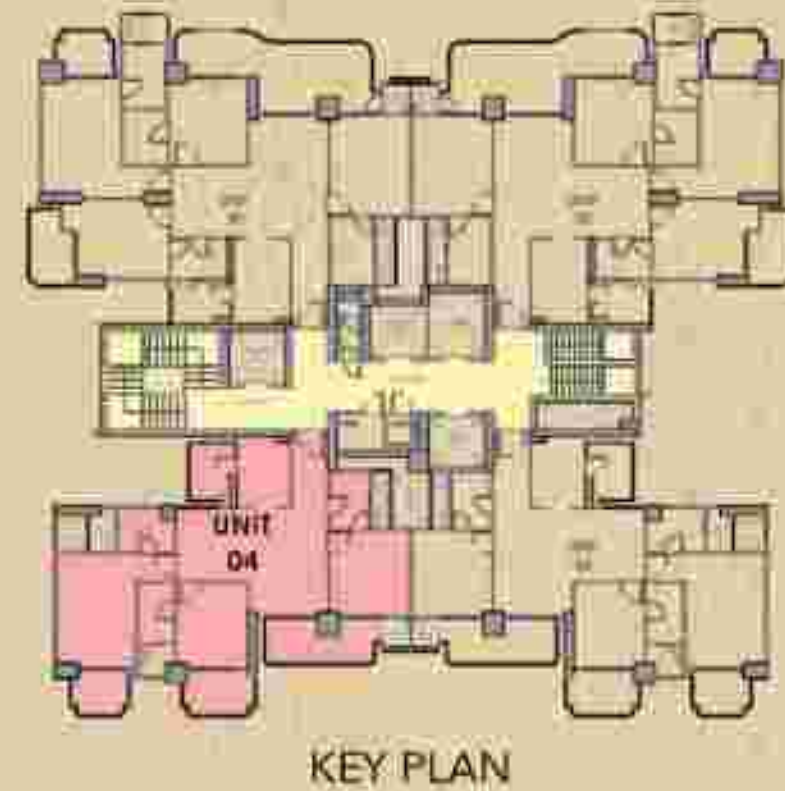
UNIT PLAN 4 - 3 BHK

1 BASEMENT+
STILT-1/PODIUM/GROUND +
STILT-2/ UPPER GROUND +
34 STOREY

3 BEDROOMS + LIVING ROOM
+ DINING + FOYER + KITCHEN
WITH UTILITY BALCONY +
3 TOILETS + 3 BALCONIES

AREA DETAILS

BUILT-UP AREA	=	137.07 SQ. MT / 1475 SQ. FT
		(Covered Area + Balcony Area)
CARPET AREA	=	92.83 SQ.MT / 999 SQ.FT
COVERED AREA	=	112.12 SQ.MT / 1207 SQ.FT
BALCONY AREA	=	24.95 SQ.MT / 268 SQ.FT
COMMON AREA	=	40.37 SQ.MT / 435 SQ.FT
TOTAL AREA	=	177.44 SQ.MT / 1910 SQ.FT





GAUR
CHRYSLIS
The Beauty of Becoming

PHASE 1 AT SECTOR 22-D, YAMUNA EXPRESSWAY

TOTAL NUMBER OF UNITS	952 – PHASE 1
TOTAL NUMBER OF TOWERS	7
FLOOR TO FLOOR HEIGHT	3.35 MTR.

COMMUNITY FACILITY

Independent Club Building, having spread in Basement floor, stilt floor, podium floor, and 2 floor plates with amenities comprising sports activities like

Squash Court	Gaming Zone	Work Stations
Badminton Court	Billiard Room	Theater Lounge
Smash Cricket	Virtual Game Simulator	Gymnasium
Play Courts	Music Room	Yoga/Aerobics/Zumba Room
Entrance Lobby with drop off on Stilt floor	Karaoke Room	Wellness Lounge (SPA area)
Landscaped Garden	Restaurant	Indoor Heated Pool (Half-Olympic Size)
Outdoor activities along with Swimming Pool (Outdoor Olympic Size) and Entrance Lobby with Art Gallery	Banquet with pre function area and Kitchen	Ice / Cold Bath
	4 Guest Rooms	
	Party Hall	

Note: All the above said Community Facilities will be shared between all towers including Phase 1 and future development (Phase 2) as these facilities will be ready with phase-2 completion.

SPECIFICATIONS

FLOORING:			WALL FINISH:	
DRAWING	TILE FLOORING		EXTERNAL	TEXTURE PAINT
DINING	TILE FLOORING		INTERNAL	ALL INTERNAL WALLS OF ROOM'S & DRAWING & DINING AREA USING OBD PAINT.
KITCHEN	TILE FLOORING			
ALL BEDROOMS	LAMINATED WOODEN FLOORING		ELECTRICAL FITTINGS:	
			EXHAUST FAN	IN TOILETS
TOILETS	TILE FLOORING		LIGHT FIXTURE	CEILING LIGHT IN DRAWING ROOM ALL BEDROOMS, KITCHEN AND TOILET.
BALCONIES	TILE FLOORING			
KITCHEN:			DOORS & WINDOWS:	
COUNTER	GRANITE KITCHEN COUNTER WITH STAINLESS STEEL SINK, FITTED R.O./HOB		EXTERNAL	UPVC SLIDING/OPENABLE DOORS & WINDOWS
	KITCHEN CABINET ONLY		INTERNAL	FLUSH DOORS FIXED IN ENGINEERED WOOD DOOR FRAME
WOOD WORK	TILES 2FT. ABOVE WORKING COUNTER.			
WALL TILES	ONE IN EACH TOILET		SANITARY WORK:	
	WALL TILES IN TOILETS UP TO DOOR LEVEL		INTERNAL PIPING	CPVC OR EQUIVALENT PIPES & FITTINGS
AIR CONDITIONING:			FITTINGS	ALL TAPS AND FITTINGS OF REPUTED BRANDS IN CHROME PLATING. WASH BASINS, WALL MOUNTED W/C OF REPUTED BRANDS IN WHITE SHADES
SPLIT ACs	1.5 TON AC IN BEDROOMS & LIVING/DINING ONLY			
WIRING & SWITCHES:			RAILING:	
WIRING	COPPER WIRING IN CONCEALED PVC CONDUITS.		BALCONY	MS RAILING, PAINTED
SWITCHES	MODULAR SWITCHES & SOCKETS IN ADEQUATE NUMBERS.		STAIRCASE	MS RAILING, PAINTED
TV POINTS	IN ALL ROOMS		SECURITY:	
			MAIN DOOR	ELECTRONIC LOCK AT MAIN DOOR

A LEGACY OF UNRIVALLED LUXURY

At Gaur Group, luxury isn't just built - it's beautifully lived. We don't just create structures; we craft timeless experiences that become cherished memories. With every landmark we design, our commitment to excellence climbs higher, delivering not just homes, but lifestyles defined by elegance and distinction. Our visionary 'life-craftsmen' are handpicked for their exceptional ability to shape spaces that go beyond imagination. Step into a world where luxury knows no limits - step into the enduring legacy of Gaur.



CREATING MASTERPIECES WITH INTENTION AND HEART

At Gaur, luxury isn't built with bricks, it's crafted with stories and this has stayed the same since our inception in the year 1995. Gaur has been revered as an icon of excellence in the world of real estate because we don't just create spaces, we craft experiences. Each landmark is a refined brushstroke in our ongoing quest to elevate the art of living, from high-end apartments to highly affordable accommodations occupied by thousands of happy and flourishing families.

Life in a Gaur home is an exceptional life, woven with countless memories. For us, your trust and happiness is our winning mantra. Our dedicated craftsmen, chosen for their unwavering commitment to excellence, pour their passion into every detail to surpass your every expectation.

Welcome to a world beyond the ordinary, where luxury is not just a label, but a legacy. Welcome to Gaur.

GAURS
your own world


LEGACY
BY GAUR
Crafted for Generations


**TRECENTO
RESIDENCES**
Art de Vivre | by Gaur


**The
Islands**
BY GAUR
BE A PART


**GAUR
NYC
RESIDENCES**
THE QUINTESSENTIAL LIFE

AWARD-WINNING EXCELLENCE, YEAR AFTER YEAR

Since 1995, Gaur's has redefined the landscape of real estate with a steadfast commitment to quality and trust. Our expansive portfolio spans from high-end luxury residences to thoughtfully crafted affordable homes - each proudly inhabited by thousands of satisfied families.

Our success is built on more than just structures - it's founded on the trust we've earned and the lives we've transformed. Guided by a bold vision for the future, we meticulously choose prime locations and deliver with precision, ensuring every project exceeds expectations.

With passion at our core and confidence in every step, Gaur's continues to shape tomorrow - creating spaces where life truly thrives.

REAL ESTATE | RETAIL | EDUCATION | HOTELS
NBFC | CONTRACTING | SPORTS | ENERGY

THE HIGHS OF OUR SUCCESS STORY

35

DELIVERED RESIDENTIAL PROJECTS

30

DELIVERED COMMERCIAL PROJECTS

24

ONGOING RERA REGISTERED PROJECTS

4

GAUR'S INTERNATIONAL SCHOOL

3

DELIVERED TOWNSHIP PROJECTS

2

DELIVERED RETAIL PROJECTS (MALLS)

THE MOST CELEBRATED REAL ESTATE DEVELOPER



<p>REALTY+ CONCLAVE AND EXCELLENCE AWARDS - NORTH 2024 BEST SELLING PROJECT OF THE YEAR - GAUR NYC RESIDENCES</p>	<p>REALTY+ CONCLAVE AND EXCELLENCE AWARDS - NORTH 2024 THE BEST PROJECT OF THE YEAR - GAUR NYC RESIDENCES</p>	<p>REALTY+ EXCELLENCE AWARDS NORTH 2023 ULTRA LUXURY LIFESTYLE PROJECT OF THE YEAR - THE ISLANDS BY GAURS</p>	<p>REALTY+ EXCELLENCE AWARDS NORTH 2023 EXCELLENCE IN DELIVERY - GAUR WORLD SMARTSTREET</p>
<p>REALTY+ EXCELLENCE AWARDS NORTH 2022 LUXURY PROJECT OF THE YEAR - THE ISLANDS BY GAURS</p>	<p>MAPIC INDIA SHOPPING CENTER AWARDS 2022 BEST MALL FOR LEISURE AND ENTERTAINMENT - DELHI NCR - GAUR CITY MALL</p>	<p>SMART CITY EMPOWERING INDIA AWARDS 2020 BEST SMART CITY DEVELOPER OF THE YEAR - GAURSONS INDIA</p>	<p>PMAY EMPOWERING INDIA AWARDS 2019 THE MOST WELL PLANNED UPCOMING PROJECT IN EWS CATEGORY - GAUR'S SEEDHARTHA</p>
<p>CNBC AWAAZ REAL ESTATE AWARDS 2018-19 BEST RESIDENTIAL PROJECT AFFORDABLE SEGMENT - NORTH ZONE - GAUR CITY 2</p>	<p>TIMES BUSINESS AWARDS 2019 BEST REAL ESTATE DEVELOPER OF THE YEAR - GAURSONS INDIA</p>	<p>CNBC AWAAZ REAL ESTATE AWARDS 2017-18 BEST RESIDENTIAL PROJECT AFFORDABLE SEGMENT - NATIONAL - GAUR CASCADES</p>	<p>CNBC AWAAZ REAL ESTATE AWARDS 2017-18 BEST RESIDENTIAL PROJECT AFFORDABLE SEGMENT - NORTH ZONE - GAUR CASCADES</p>
<p>NDTV PROPERTY AWARDS 2016-17 BUDGET APPOINTMENT PROJECT OF THE YEAR (2017) HIGH RISES - GAUR CASCADES</p>	<p>NDTV PROPERTY AWARDS 2016-17 BEST COMMUNITY PROJECT - GAUR CITY</p>	<p>CNBC AWAAZ REAL ESTATE AWARDS 2016-17 BEST TOWNSHIP PROJECT - GAUR CITY</p>	

30+

YEARS OF UNFALTERING COMMITMENT

70+

SUCCESSFULLY DELIVERED PROJECTS

45000+

POSSESSIONS GIVEN (2014-2024)

75000+

SUCCESSFULLY DELIVERED UNITS

3 Lakh+

HAPPY SATISFIED CUSTOMERS

100 Million+

SQUARE FEET AREA SUCCESSFULLY DEVELOPED

FORM NO: UPREGAFB/2023/44/N/2025

www.gaursonsindia.com

COLLECTION ACCOUNT DETAILS

NAME: GAURSONS PROMOTERS PVT LTD

PROJECT COLLECTION ACCOUNT NO.: 9150397818

BANK NAME: KOTAK MAHINDRA BANK

IFSC CODE: KKBK0005038

BANK ADDRESS: GROUND FLOOR, SHOP NO. GF-3, HARSHA MALL, ALFAH,
COMMERCIAL BELT, GREATER NOIDA 201305

LAUNCH DATE: 04-11-2025



GAUR CHRYsalIS

The Beauty of Becoming

(PHASE - I)

COLLECTION ACCOUNT DETAILS:

NAME: GAURSONS PROMOTERS PVT LTD COLLECTION A/C FOR GAUR CHRYsalIS (Phase I)

PROJECT COLLECTION ACCOUNT NO.: 9150397818 BANK NAME: KOTAK MAHINDRA BANK

IFSC CODE: KKBK0005038 | BANK ADDRESS: GROUND FLOOR, SHOP NO. GF-3, HARSHA MALL, ALFAH,
COMMERCIAL BELT, GREATER NOIDA 201305 | LAUNCH DATE: 04-11-2025

Scan to follow us on



Instagram



Youtube

GAURS
your own world

GAURSONS PROMOTERS PRIVATE LIMITED

Site Address : Gaur Chrysalis, Plot No. Gh-12, Sector-22 D, YEIDA, Greater Noida, U.P.
www.gaurchrysalis.com | care@gaurchrysalis.com

Corporate Office: Gaur Biz Park, Plot No:1, Abhay Khand-II, Indirapuram, Ghaziabad - 201014
www.gaursonsindia.com

AFTER SALES CUSTOMER CARE | 1800 309 3052

CHRYSLIS 2.0

PRICE LIST

BASIC SALES PRICE

₹ 8,499 PER SQ FT

INR Per Sq. Ft

FLOOR	PLC	VIEW	PLC
1st - 5th	750	LANDSCAPE	225
6th - 10th	700		
11th - 15th	600	PARK FACING	225
16th - 20th	500		
21st - 25th	400	45 MTR. ROAD	400
26th - 30th	300		
31st - 33rd	200	CORNER PLC	150
Top Floor	-		

ADDITIONAL CHARGES

INR

Car Parking (Two)	7,00,000
Club Membership	4,45,000
Electricity Infra Charges	1,25,000
Power Backup	1,00,000
IFMS: INR 50 per Sq. Ft. Maintenance: INR 3.75 per Sq. Ft. + GST	
1 year advance maintenance to be payable at the time of possession	

Disclaimer

- GST as applicable.
- The above-mentioned prices are the sole discretion of management and can be changed any time.
- ECPA is allocated along with a particular apartment and will be calculate @ 3,999 per Sq. Ft.