







## Club 104

Spread over 6,843 sq. yd. with a built up area of 22,000 sq. ft. (approx), Club 104 is the cynosure of M2K Olive Greens and sets it apart from other projects under the DDJAY scheme. Exclusively designed for our residents, the Club boasts state-of-the-art recreational amenities such as a swimming pool, cafe, home theatre, banquet hall and a range of sports facilities including cricket, lawn tennis, squash and a half basketball court. More than just fostering an active lifestyle, the Club 104 is poised to shape and fulfill your dreams.





# Club 104

A distinctive and lavish club featuring exceptional sports facilities.

- Swimming Pool with Cabanas
- Kids Pool
- Changing Room with Steam & Shower
- Gymnasium, Aerobics & Yoga Room
- Squash Court
- Indoor Games Room with TT
- Tennis Court
- Half Basketball Court
- Cricket Practice Net
- Sports Zone



Yoga Room & Aerobics Room



Gymnasium



Squash Court



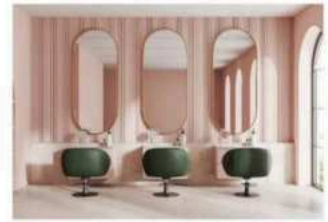
The images used above are artistic impressions used for representative purpose only.



# Club 104

A one-of-a-kind luxurious club offering an exclusive array of lifestyle activities.

- Banquet Hall with Lawn
- Café/Restaurant
- Meeting & Conference Room
- Salon
- Library
- Crèche
- Home Theatre
- Party Terrace
- Medical Room
- Card Room
- Club & Facility Office



Salon



Banquet Hall with Lawn



Café/Restaurant

The images used above are artistic impressions used for representation purpose only.



# Infrastructural Amenities

- Gated Complex
- Parks with Landscaped Greens
- Paved Roads and Sidewalks with Intermittent Plantation/Greens
- Street Lighting
- Milk & Vegetable Booth
- Underground Electric Cable
- Underground Water Tank
- Sewage Treatment Plant (underground)
- Water Treatment Plant
- Electric Supply Substation



The images used above are merely representational and for representation purpose only.



Paved Roads and Sidewalks



Milk & Vegetable Booth



Gated Complex

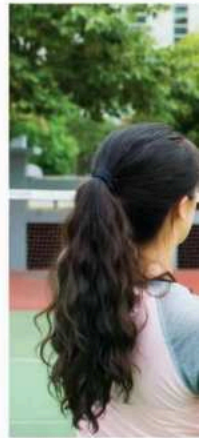




# Outdoor Facilities

**Outdoor facilities to help you  
live an active lifestyle.**

- Badminton Courts
- Skating Rink
- Kids Play Area
- Outdoor Gymnasium
- Jogging Track
- Yoga & Meditation Area
- Pet Park
- Amphitheatre
- Gazebo
- Bus Stop
- Temple





## Kids Play Area

The Kids Play Area offers a chance for kids to interact with each other and enhance their skills. Furnished with engaging play structures and equipment for physical development, it serves as an excellent environment for children to stay active and socially engaged. Featuring an array of swings and open spaces for activities like running and jumping, it caters to diverse recreational needs.







**Safety  
& Security**

The images used above are artistic impression used for representation purpose only.



**Facilities to keep you safe & secure, always.**

- Secure, gated complex with regulated access
- Round-the-clock security
- Boom Barriers at entry & exit points
- CCTV coverage in common areas



(The images used above are artistic impressions used for representation purposes only)



# Location Advantage

M2K Olive Greens residents are rewarded with a home address that is unlike any other, it is well connected to Dwarka Expressway, it has convenient access to the best in retail, education, medical care, and corporate parks.



## Distance From

- Approved Metro Station (in Sector 101) - 1 Km Approx
- Gurugram Railway Station - 3 Kms Approx
- Hero Honda Chowk - 7 Kms Approx
- Rajeev Chowk Gurugram - 8 Kms Approx
- IGI Airport - 21 Kms Approx



## Hospitals in close vicinity

- Sheela Mata Medical College & Hospital\* - 2 Kms Approx
- Civil Hospital - 3 Kms Approx
- ESIC Hospital - 4 Kms Approx
- Rion Multi Speciality Hospital - 6 Kms Approx
- Park Hospital - 9 Kms Approx
- Manipal Hospital - 10 Kms Approx
- Medanta Hospital - 10 Kms Approx
- AIIMS Jhajjar - 14 Kms Approx



## Schools in close vicinity

- Delhi Public School
- Gurugram Global Height School
- Imperial Heritage
- Prime Scholars
- S N International School



## Global City Gurugram

The upcoming world class Global City in close vicinity will be a growth driver for this area. The Global City is a mixed-use project spread over more than 1000 acres of land in sectors 36, 36B, 37, and 37B of Gurugram, and is being developed by HSIIDC. Designed in accordance with international best practices, it is envisioned to be a "City within a City" offering inspiring workspaces, customized residential towers, retail areas, inclusive social infrastructure, multi-modal connectivity. A 6 kms long Intra Global City MRTS loop connects to the Gurugram-Manesar-Panchgaon metro to provide public transport connectivity to the rest of Gurugram.



\*Under Construction





# THANK YOU

FOR MORE DETAILS



[m2k.developerprojects.com](https://m2k.developerprojects.com)

